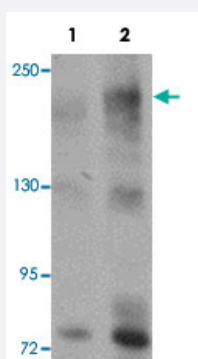


APC2 polyclonal antibody

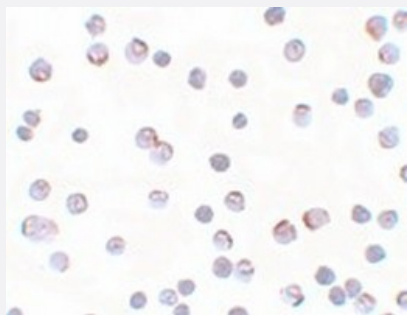
Catalog # PAB19232 Size 100 ug

Applications



Western Blot (Cell lysate)

Western blot analysis of HeLa cells with APC2 polyclonal antibody (Cat # PAB19232) at (Lane 1) 1 and (Lane 2) 2 ug/mL dilution.



Immunocytochemistry

Immunocytochemical staining of HeLa cells with APC2 polyclonal antibody (Cat # PAB19232) at 5 ug/mL dilution.

Specification

Product Description	Rabbit polyclonal antibody rasied against synthetic peptide of APC2.
Immunogen	A synthetic peptide corresponding to 18 amino acids near internal region of human APC2.
Host	Rabbit
Reactivity	Human, Mouse
Form	Liquid
Purification	Peptide affinity purification

Concentration	1 mg/mL
Recommend Usage	Western Blot (1-2 ug/mL) Immunocytochemistry (5 ug/mL) The optimal working dilution should be determined by the end user.
Storage Buffer	In PBS (0.02% sodium azide)
Storage Instruction	Store at 4°C for three months. For long term storage store at -20°C. Aliquot to avoid repeated freezing and thawing.
Note	This product contains sodium azide: a POISONOUS AND HAZARDOUS SUBSTANCE which should be handled by trained staff only.

Applications

- Western Blot (Cell lysate)

Western blot analysis of HeLa cells with APC2 polyclonal antibody (Cat # PAB19232) at (Lane 1) 1 and (Lane 2) 2 ug/mL dilution.

- Immunocytochemistry

Immunocytochemical staining of HeLa cells with APC2 polyclonal antibody (Cat # PAB19232) at 5 ug/mL dilution.

- Enzyme-linked Immunoabsorbent Assay

Gene Info — APC2

Entrez GeneID	10297
Protein Accession#	BAA34611
Gene Name	APC2
Gene Alias	APCL
Gene Description	adenomatosis polyposis coli 2
Gene Ontology	Hyperlink
Other Designations	adenomatous polyposis coli like

Pathway

- [Basal cell carcinoma](#)
- [Colorectal cancer](#)
- [Endometrial cancer](#)
- [Pathways in cancer](#)
- [Regulation of actin cytoskeleton](#)
- [Wnt signaling pathway](#)

Disease

- [Cardiovascular Diseases](#)
- [Diabetes Mellitus](#)
- [Edema](#)