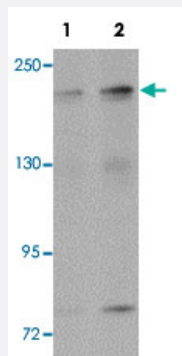


ANAPC1 polyclonal antibody

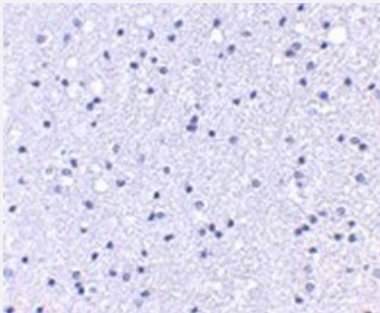
Catalog # PAB19231 Size 100 ug

Applications



Western Blot (Cell lysate)

Western blot analysis of SK-N-SH cells with ANAPC1 polyclonal antibody (Cat # PAB19231) at (Lane 1) 1 and (Lane 2) 2 ug/mL dilution.



Immunohistochemistry

Immunohistochemical staining of human brain tissue with ANAPC1 polyclonal antibody (Cat # PAB19231) at 5 ug/mL dilution.

Specification

Product Description	Rabbit polyclonal antibody raised against synthetic peptide of ANAPC1.
Immunogen	A synthetic peptide corresponding to 17 amino acids near C-terminus of human ANAPC1.
Host	Rabbit
Reactivity	Human, Mouse
Form	Liquid
Purification	Peptide affinity purification

Concentration	1 mg/mL
Recommend Usage	Western Blot (1-2 ug/mL) Immunohistochemistry (5 ug/mL) The optimal working dilution should be determined by the end user.
Storage Buffer	In PBS (0.02% sodium azide)
Storage Instruction	Store at 4°C for three months. For long term storage store at -20°C. Aliquot to avoid repeated freezing and thawing.
Note	This product contains sodium azide: a POISONOUS AND HAZARDOUS SUBSTANCE which should be handled by trained staff only.

Applications

- Western Blot (Cell lysate)

Western blot analysis of SK-N-SH cells with ANAPC1 polyclonal antibody (Cat # PAB19231) at (Lane 1) 1 and (Lane 2) 2 ug/mL dilution.

- Immunohistochemistry

Immunohistochemical staining of human brain tissue with ANAPC1 polyclonal antibody (Cat # PAB19231) at 5 ug/mL dilution.

- Enzyme-linked Immunoabsorbent Assay

Gene Info — ANAPC1

Entrez GeneID	64682
Protein Accession#	Q9H1A4
Gene Name	ANAPC1
Gene Alias	APC1, MCPR, TSG24
Gene Description	anaphase promoting complex subunit 1
Omim ID	608473
Gene Ontology	Hyperlink
Gene Summary	ANAPC1 is 1 of at least 10 subunits of the anaphase-promoting complex (APC), which functions at the metaphase-to-anaphase transition of the cell cycle and is regulated by spindle checkpoint proteins. The APC is an E3 ubiquitin ligase that targets cell cycle regulatory proteins for degradation by the proteasome, thereby allowing progression through the cell cycle.[supplied by OMIM]

Other Designations

anaphase-promoting complex 1 (meiotic checkpoint regulator)

Pathway

- [Cell cycle](#)
- [Ubiquitin mediated proteolysis](#)