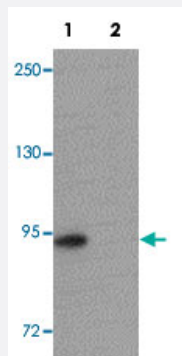


ZC3H12D polyclonal antibody

Catalog # PAB19227 Size 100 ug

Applications



Western Blot (Cell lysate)

Western blot analysis of THP-1 cells with ZC3H12D polyclonal antibody (Cat # PAB19227) at 1 ug/mL in (Lane 1) the absence and (Lane 2) the presence of blocking peptide.

Specification

Product Description	Rabbit polyclonal antibody raised against synthetic peptide of ZC3H12D.
Immunogen	A synthetic peptide corresponding to 17 amino acids near C-terminus of human ZC3H12D.
Host	Rabbit
Reactivity	Human
Form	Liquid
Purification	Affinity purification
Concentration	1 mg/mL
Recommend Usage	Western blot (1-2 ug/mL) The optimal working dilution should be determined by the end user.
Storage Buffer	In PBS (0.02% sodium azide)
Storage Instruction	Store at 4°C for three months. For long term storage store at -20°C. Aliquot to avoid repeated freezing and thawing.

Note

This product contains sodium azide: a POISONOUS AND HAZARDOUS SUBSTANCE which should be handled by trained staff only.

Applications

- Western Blot (Cell lysate)

Western blot analysis of THP-1 cells with ZC3H12D polyclonal antibody (Cat # PAB19227) at 1 ug/mL in (Lane 1) the absence and (Lane 2) the presence of blocking peptide.

- Enzyme-linked Immunoabsorbent Assay

Gene Info — ZC3H12D

Entrez GeneID	340152
Gene Name	ZC3H12D
Gene Alias	C6orf95, FLJ46041, MCP1P4, dJ281H8.1, p34
Gene Description	zinc finger CCCH-type containing 12D
Omim ID	611106
Gene Ontology	Hyperlink
Other Designations	MCP induced protein 4 MCP-induced protein 4