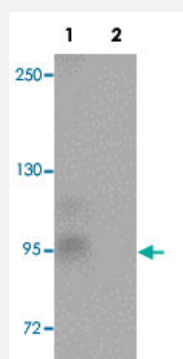


ZC3H12C polyclonal antibody

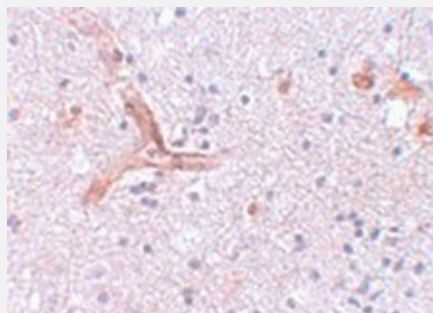
Catalog # PAB19226 Size 100 ug

Applications



Western Blot (Tissue lysate)

Western blot analysis of rat brain tissue with ZC3H12C polyclonal antibody (Cat # PAB19226) at 1 ug/mL in (Lane 1) the absence and (Lane 2) the presence of blocking peptide.



Immunohistochemistry

Immunohistochemical staining of human brain tissue with ZC3H12C polyclonal antibody (Cat # PAB19226) at 5 ug/mL dilution.

Specification

Product Description

Rabbit polyclonal antibody raised against synthetic peptide of ZC3H12C.

Immunogen

A synthetic peptide corresponding to 17 amino acids near N-terminus of human ZC3H12C.

Host

Rabbit

Reactivity

Human, Mouse, Rat

Form

Liquid

Purification

Peptide affinity purification

Concentration	1 mg/mL
Recommend Usage	Western Blot (1 ug/mL) Immunohistochemistry (5 ug/mL) The optimal working dilution should be determined by the end user.
Storage Buffer	In PBS (0.02% sodium azide)
Storage Instruction	Store at 4°C for three months. For long term storage store at -20°C. Aliquot to avoid repeated freezing and thawing.
Note	This product contains sodium azide: a POISONOUS AND HAZARDOUS SUBSTANCE which should be handled by trained staff only.

Applications

- Western Blot (Tissue lysate)

Western blot analysis of rat brain tissue with ZC3H12C polyclonal antibody (Cat # PAB19226) at 1 ug/mL in (Lane 1) the absence and (Lane 2) the presence of blocking peptide.

- Immunohistochemistry

Immunohistochemical staining of human brain tissue with ZC3H12C polyclonal antibody (Cat # PAB19226) at 5 ug/mL dilution.

- Enzyme-linked Immunoabsorbent Assay

Gene Info — ZC3H12C

Entrez GeneID	85463
Protein Accession#	NP_203748
Gene Name	ZC3H12C
Gene Alias	KIAA1726, MCPIP3
Gene Description	zinc finger CCCH-type containing 12C
Gene Ontology	Hyperlink
Other Designations	MCP induced protein 3 MCP-induced protein 3

Disease

- [Tobacco Use Disorder](#)