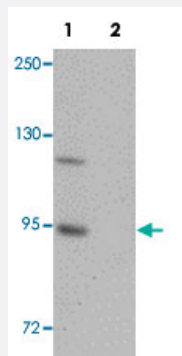


ZC3H12B polyclonal antibody

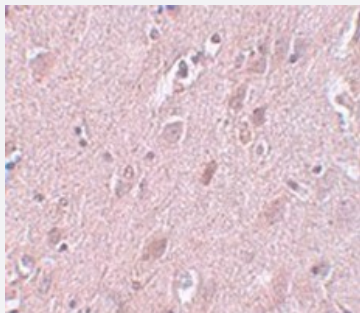
Catalog # PAB19225 Size 100 ug

Applications



Western Blot (Tissue lysate)

Western blot analysis of mouse brain tissue with ZC3H12B polyclonal antibody (Cat # PAB19225) at 1 ug/mL in (Lane 1) the absence and (Lane 2) the presence of blocking peptide .



Immunohistochemistry

Immunohistochemical staining of human brain tissue with ZC3H12B polyclonal antibody (Cat # PAB19225) at 5 ug/mL dilution.

Specification

Product Description	Rabbit polyclonal antibody rasied against synthetic peptide of ZC3H12B.
Immunogen	A synthetic peptide corresponding to 17 amino acids near N-terminus of human ZC3H12B.
Host	Rabbit
Reactivity	Human, Mouse, Rat
Form	Liquid
Purification	Peptide affinity purification

Concentration	1 mg/mL
Recommend Usage	Western Blot (1 ug/mL) Immunohistochemistry (5 ug/mL) The optimal working dilution should be determined by the end user.
Storage Buffer	In PBS (0.02% sodium azide)
Storage Instruction	Store at 4°C for three months. For long term storage store at -20°C. Aliquot to avoid repeated freezing and thawing.
Note	This product contains sodium azide: a POISONOUS AND HAZARDOUS SUBSTANCE which should be handled by trained staff only.

Applications

- Western Blot (Tissue lysate)

Western blot analysis of mouse brain tissue with ZC3H12B polyclonal antibody (Cat # PAB19225) at 1 ug/mL in (Lane 1) the absence and (Lane 2) the presence of blocking peptide .

- Immunohistochemistry

Immunohistochemical staining of human brain tissue with ZC3H12B polyclonal antibody (Cat # PAB19225) at 5 ug/mL dilution.

- Enzyme-linked Immunoabsorbent Assay

Gene Info — ZC3H12B

Entrez GeneID	340554
Protein Accession#	NP_001010888
Gene Name	ZC3H12B
Gene Alias	CXorf32, MCPIP2
Gene Description	zinc finger CCCH-type containing 12B
Gene Ontology	Hyperlink
Other Designations	MCP induced protein 2 MCP-induced protein 2