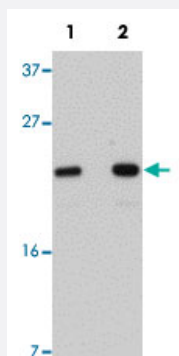


LYRM2 polyclonal antibody

Catalog # PAB19218 Size 100 ug

Applications



Western Blot (Cell lysate)

Western blot analysis of A-549 cells with LYRM2 polyclonal antibody (Cat # PAB19218) at (Lane 1) 1 and (Lane 2) 2 ug/mL dilution.



Immunocytochemistry

Immunocytochemical staining of A-549 cells with LYRM2 polyclonal antibody (Cat # PAB19218) at 20 ug/mL dilution.

Specification

Product Description	Rabbit polyclonal antibody raised against synthetic peptide of LYRM2.
Immunogen	A synthetic peptide corresponding to 16 amino acids near C-terminus of human LYRM2.
Host	Rabbit
Reactivity	Human, Mouse, Rat
Form	Liquid
Purification	Peptide affinity purification

Concentration	1 mg/mL
Recommend Usage	Western Blot (1-2 ug/mL) Immunocytochemistry (20 ug/mL) The optimal working dilution should be determined by the end user.
Storage Buffer	In PBS (0.02% sodium azide)
Storage Instruction	Store at 4°C for three months. For long term storage store at -20°C. Aliquot to avoid repeated freezing and thawing.
Note	This product contains sodium azide: a POISONOUS AND HAZARDOUS SUBSTANCE which should be handled by trained staff only.

Applications

- Western Blot (Cell lysate)

Western blot analysis of A-549 cells with LYRM2 polyclonal antibody (Cat # PAB19218) at (Lane 1) 1 and (Lane 2) 2 ug/mL dilution.

- Immunocytochemistry

Immunocytochemical staining of A-549 cells with LYRM2 polyclonal antibody (Cat # PAB19218) at 20 ug/mL dilution.

- Enzyme-linked Immunoabsorbent Assay

Gene Info — LYRM2

Entrez GeneID	57226
Protein Accession#	NP_065199
Gene Name	LYRM2
Gene Alias	DJ122O8.2, FLJ21130, MGC104253
Gene Description	LYR motif containing 2
Gene Ontology	Hyperlink
Other Designations	-