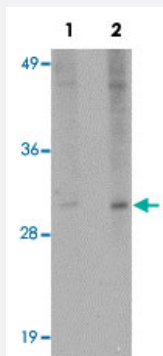


EFHD2 polyclonal antibody

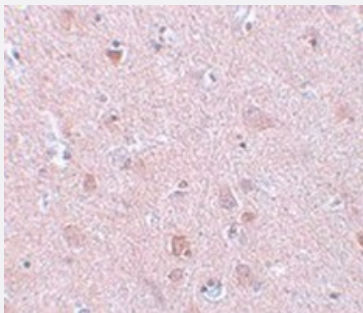
Catalog # PAB19216 Size 100 ug

Applications



Western Blot (Tissue lysate)

Western blot analysis of mouse brain tissue with EFHD2 polyclonal antibody (Cat # PAB19216) at (Lane 1) 1 and (Lane 2) 2 ug/mL dilution.



Immunohistochemistry

Immunohistochemical staining of human brain tissue with EFHD2 polyclonal antibody (Cat # PAB19216) at 5 ug/mL dilution.

Specification

Product Description	Rabbit polyclonal antibody raised against synthetic peptide of EFHD2.
Immunogen	A synthetic peptide corresponding to 16 amino acids near N-terminus of human EFHD2.
Host	Rabbit
Reactivity	Human, Mouse, Rat
Form	Liquid
Purification	Peptide affinity purification

Concentration	1 mg/mL
Recommend Usage	Western Blot (1-2 ug/mL) Immunohistochemistry (5 ug/mL) The optimal working dilution should be determined by the end user.
Storage Buffer	In PBS (0.02% sodium azide)
Storage Instruction	Store at 4°C for three months. For long term storage store at -20°C. Aliquot to avoid repeated freezing and thawing.
Note	This product contains sodium azide: a POISONOUS AND HAZARDOUS SUBSTANCE which should be handled by trained staff only.

Applications

- Western Blot (Tissue lysate)

Western blot analysis of mouse brain tissue with EFHD2 polyclonal antibody (Cat # PAB19216) at (Lane 1) 1 and (Lane 2) 2 ug/mL dilution.

- Immunohistochemistry

Immunohistochemical staining of human brain tissue with EFHD2 polyclonal antibody (Cat # PAB19216) at 5 ug/mL dilution.

- Enzyme-linked Immunoabsorbent Assay

Gene Info — EFHD2

Entrez GeneID	79180
Protein Accession#	NP_077305
Gene Name	EFHD2
Gene Alias	MGC4342
Gene Description	EF-hand domain family, member D2
Gene Ontology	Hyperlink
Gene Summary	O
Other Designations	EF hand domain containing 2 EF hand domain family, member D2 OTTHUMP00000002319 novel EF Hand domain-containing protein swiprosin 1