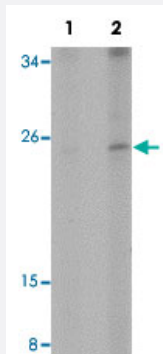


EFHD1 polyclonal antibody

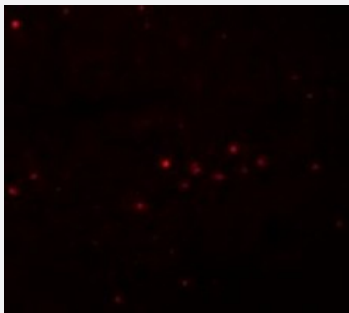
Catalog # PAB19215 Size 100 ug

Applications



Western Blot (Tissue lysate)

Western blot analysis of human spleen tissue with EFHD1 polyclonal antibody (Cat # PAB19215) at (Lane 1) 2 and (Lane 2) 4 ug/mL dilution.



Immunofluorescence

Immunofluorescence staining of rat spleen tissue with EFHD1 polyclonal antibody (Cat # PAB19215) at 5 ug/mL dilution.

Specification

Product Description	Rabbit polyclonal antibody rasied against synthetic peptide of EFHD1.
Immunogen	A synthetic peptide corresponding to 14 amino acids near N-terminus of human EFHD1.
Host	Rabbit
Reactivity	Human, Mouse, Rat
Form	Liquid
Purification	Peptide affinity purification

Concentration	1 mg/mL
Recommend Usage	Western Blot (2-4 ug/mL) Immunofluorescence (5 ug/mL) The optimal working dilution should be determined by the end user.
Storage Buffer	In PBS (0.02% sodium azide)
Storage Instruction	Store at 4°C for three months. For long term storage store at -20°C. Aliquot to avoid repeated freezing and thawing.
Note	This product contains sodium azide: a POISONOUS AND HAZARDOUS SUBSTANCE which should be handled by trained staff only.

Applications

- Western Blot (Tissue lysate)

Western blot analysis of human spleen tissue with EFHD1 polyclonal antibody (Cat # PAB19215) at (Lane 1) 2 and (Lane 2) 4 ug/mL dilution.

- Immunofluorescence

Immunofluorescence staining of rat spleen tissue with EFHD1 polyclonal antibody (Cat # PAB19215) at 5 ug/mL dilution.

- Enzyme-linked Immunoabsorbent Assay

Gene Info — EFHD1

Entrez GeneID	80303
Protein Accession#	NP_079478
Gene Name	EFHD1
Gene Alias	DKFZp781H0842, FLJ13612, MST133, MSTP133, PP3051
Gene Description	EF-hand domain family, member D1
Omim ID	611617
Gene Ontology	Hyperlink
Gene Summary	EFHD1 is an EF-hand domain-containing protein that displays increased expression during neuronal differentiation (Tominaga and Tomooka, 2002 [PubMed 12270117]).[supplied by OMIM]
Other Designations	EF hand domain containing 1 EF hand domain family, member D1