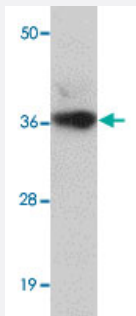


# LRRC19 polyclonal antibody

Catalog # PAB19211      Size 100 ug

## Applications



### Western Blot (Cell lysate)

Western blot analysis of K-562 cells with LRRC19 polyclonal antibody (Cat # PAB19211) at 1 ug/mL dilution.



### Immunocytochemistry

Immunocytochemical staining of K-562 cells with LRRC19 polyclonal antibody (Cat # PAB19211) at 25 ug/mL dilution.

## Specification

<b>Product Description</b>	Rabbit polyclonal antibody raised against synthetic peptide of LRRC19.
<b>Immunogen</b>	A synthetic peptide corresponding to 17 amino acids near C-terminus of human LRRC19.
<b>Host</b>	Rabbit
<b>Reactivity</b>	Human, Mouse
<b>Form</b>	Liquid
<b>Purification</b>	Peptide affinity purification
<b>Concentration</b>	1 mg/mL

<b>Recommend Usage</b>	Western Blot (1 ug/mL) Immunocytochemistry (2.5 ug/mL) The optimal working dilution should be determined by the end user.
<b>Storage Buffer</b>	In PBS (0.02% sodium azide)
<b>Storage Instruction</b>	Store at 4°C for three months. For long term storage store at -20°C. Aliquot to avoid repeated freezing and thawing.
<b>Note</b>	This product contains sodium azide: a POISONOUS AND HAZARDOUS SUBSTANCE which should be handled by trained staff only.

## Applications

- Western Blot (Cell lysate)

Western blot analysis of K-562 cells with LRRC19 polyclonal antibody (Cat # PAB19211) at 1 ug/mL dilution.

- Immunocytochemistry

Immunocytochemical staining of K-562 cells with LRRC19 polyclonal antibody (Cat # PAB19211) at 25 ug/mL dilution.

- Enzyme-linked Immunoabsorbent Assay

## Gene Info — LRRC19

<b>Entrez GeneID</b>	<a href="#">64922</a>
<b>Protein Accession#</b>	<a href="#">NP_075052</a>
<b>Gene Name</b>	LRRC19
<b>Gene Alias</b>	FLJ21302
<b>Gene Description</b>	leucine rich repeat containing 19
<b>Gene Ontology</b>	<a href="#">Hyperlink</a>
<b>Other Designations</b>	OTTHUMP00000021165