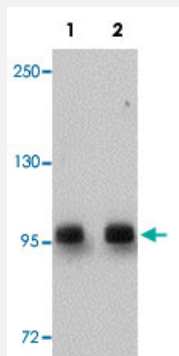


DCLK2 polyclonal antibody

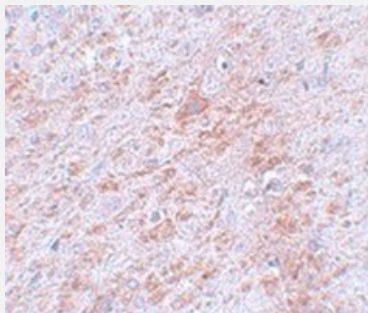
Catalog # PAB19207 Size 100 ug

Applications



Western Blot (Tissue lysate)

Western blot analysis of rat brain tissue with DCLK2 polyclonal antibody (Cat # PAB19207) at (Lane 1) 1 and (Lane 2) 2 ug/mL dilution.



Immunohistochemistry

Immunohistochemical staining of rat brain tissue with DCLK2 polyclonal antibody (Cat # PAB19207) at 5 ug/mL dilution.

Specification

Product Description	Rabbit polyclonal antibody raised against synthetic peptide of DCLK2.
Immunogen	A synthetic peptide corresponding to 14 amino acids near C-terminus of human DCLK2.
Host	Rabbit
Reactivity	Human, Mouse, Rat
Form	Liquid
Purification	Affinity purification

Concentration	1 mg/mL
Recommend Usage	Western blot (1-2 ug/mL) The optimal working dilution should be determined by the end user.
Storage Buffer	In PBS (0.02% sodium azide)
Storage Instruction	Store at 4°C for three months. For long term storage store at -20°C. Aliquot to avoid repeated freezing and thawing.
Note	This product contains sodium azide: a POISONOUS AND HAZARDOUS SUBSTANCE which should be handled by trained staff only.

Applications

- Western Blot (Tissue lysate)

Western blot analysis of rat brain tissue with DCLK2 polyclonal antibody (Cat # PAB19207) at (Lane 1) 1 and (Lane 2) 2 ug/mL dilution.

- Immunohistochemistry

Immunohistochemical staining of rat brain tissue with DCLK2 polyclonal antibody (Cat # PAB19207) at 5 ug/mL dilution.

- Enzyme-linked Immunoabsorbent Assay

Gene Info — DCLK2

Entrez GeneID	166614
GeneBank Accession#	NP_001035350
Gene Name	DCLK2
Gene Alias	DCAMKL2, DCDC3, DCDC3B, DCK2, DKFZp761I032, MGC45428
Gene Description	doublecortin-like kinase 2
Gene Ontology	Hyperlink
Other Designations	doublecortin and CaM kinase-like 2