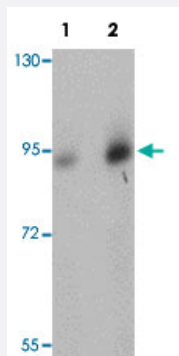


DCLK1 polyclonal antibody

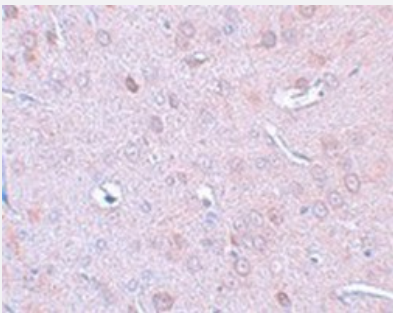
Catalog # PAB19206 Size 100 ug

Applications



Western Blot (Tissue lysate)

Western blot analysis of human brain tissue with DCLK1 polyclonal antibody (Cat # PAB19206) at (Lane 1) 0.5 and (Lane 2) 1 ug/mL dilution.



Immunohistochemistry

Immunohistochemical staining of rat brain tissue with DCLK1 polyclonal antibody (Cat # PAB19206) at 25 ug/mL dilution.

Specification

Product Description	Rabbit polyclonal antibody raised against synthetic peptide of DCLK1.
Immunogen	A synthetic peptide corresponding to 14 amino acids near N-terminus of human DCLK1.
Host	Rabbit
Reactivity	Human, Mouse, Rat
Form	Liquid
Purification	Affinity purification

Concentration	1 mg/mL
Recommend Usage	Western blot (0.5-1 ug/mL) The optimal working dilution should be determined by the end user.
Storage Buffer	In PBS (0.02% sodium azide)
Storage Instruction	Store at 4°C for up to one year. Aliquot to avoid repeated freezing and thawing.
Note	This product contains sodium azide: a POISONOUS AND HAZARDOUS SUBSTANCE which should be handled by trained staff only.

Applications

- Western Blot (Tissue lysate)

Western blot analysis of human brain tissue with DCLK1 polyclonal antibody (Cat # PAB19206) at (Lane 1) 0.5 and (Lane 2) 1 ug/mL dilution.

- Immunohistochemistry

Immunohistochemical staining of rat brain tissue with DCLK1 polyclonal antibody (Cat # PAB19206) at 25 ug/mL dilution.

- Enzyme-linked Immunoabsorbent Assay

Gene Info — DCLK1

Entrez GeneID	9201
GeneBank Accession#	NP_004725
Gene Name	DCLK1
Gene Alias	DCAMKL1, DCDC3A, DCLK, KIAA0369
Gene Description	doublecortin-like kinase 1
Omim ID	604742
Gene Ontology	Hyperlink
Gene Summary	DCAMKL1 is a microtubule-associated protein that phosphorylates itself and myelin basic protein (MBP; MIM 159430). DCAMKL1 has microtubule polymerizing activity that is independent of its protein kinase activity (Lin et al., 2000 [PubMed 11124993]).[supplied by OMIM]
Other Designations	OTTHUMP00000018250 doublecortin and CaM kinase-like 1

Disease

- [Cognition](#)
- [Intelligence Tests](#)
- [Memory](#)
- [Tobacco Use Disorder](#)