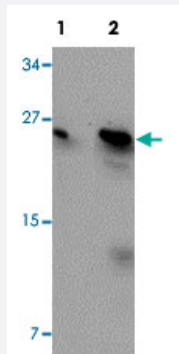


## BCAS2 polyclonal antibody

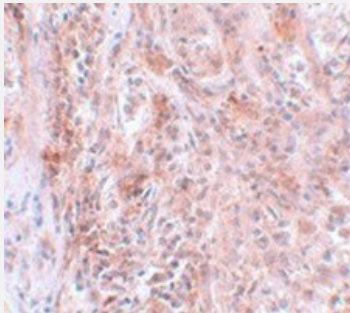
Catalog # PAB19203      Size 100 ug

### Applications



#### Western Blot (Cell lysate)

Western blot analysis of MCF-7 cells with BCAS2 polyclonal antibody (Cat # PAB19203) at (Lane 1) 0.5 and (Lane 2) 1 ug/mL dilution.



#### Immunohistochemistry

Immunohistochemical staining of human breast cancer tissue with BCAS2 polyclonal antibody (Cat # PAB19203) at 5 ug/mL dilution.

### Specification

<b>Product Description</b>	Rabbit polyclonal antibody raised against synthetic peptide of BCAS2.
<b>Immunogen</b>	A synthetic peptide corresponding to 14 amino acids near C-terminus of human BCAS2.
<b>Host</b>	Rabbit
<b>Reactivity</b>	Human, Mouse, Rat
<b>Form</b>	Liquid
<b>Purification</b>	Affinity purification

Concentration	1 mg/mL
Recommend Usage	Western blot (0.5-1 ug/mL) The optimal working dilution should be determined by the end user.
Storage Buffer	In PBS (0.02% sodium azide)
Storage Instruction	Store at 4°C for three months. For long term storage store at -20°C. Aliquot to avoid repeated freezing and thawing.
Note	This product contains sodium azide: a POISONOUS AND HAZARDOUS SUBSTANCE which should be handled by trained staff only.

## Applications

- Western Blot (Cell lysate)

Western blot analysis of MCF-7 cells with BCAS2 polyclonal antibody (Cat # PAB19203) at (Lane 1) 0.5 and (Lane 2) 1 ug/mL dilution.

- Immunohistochemistry

Immunohistochemical staining of human breast cancer tissue with BCAS2 polyclonal antibody (Cat # PAB19203) at 5 ug/mL dilution.

- Enzyme-linked Immunoabsorbent Assay

## Gene Info — BCAS2

Entrez GeneID	<a href="#">10286</a>
GeneBank Accession#	<a href="#">CAG46834</a>
Gene Name	BCAS2
Gene Alias	DAM1
Gene Description	breast carcinoma amplified sequence 2
Omim ID	<a href="#">605783</a>
Gene Ontology	<a href="#">Hyperlink</a>
Gene Summary	amplified in breast cancer
Other Designations	OTTHUMP00000013668 spliceosome associated protein, amplified in breast cancer