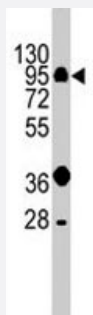


PROX1 polyclonal antibody

Catalog # PAB1920

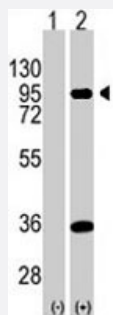
Size 400 uL

Applications



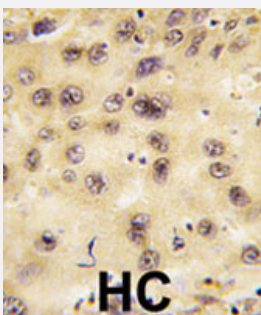
Western Blot (Cell lysate)

Western blot analysis of PROX1 polyclonal antibody (Cat # PAB1920) in HepG2 cell line lysates (35 ug/lane). PROX1 (arrow) was detected using the purified polyclonal antibody.



Western Blot (Transfected lysate)

Western blot analysis of PROX1 (arrow) using PROX1 polyclonal antibody (Cat # PAB1920). 293 cell lysates (2 ug/lane) either nontransfected (Lane 1) or transiently transfected with the PROX1 gene (Lane 2) (Origene Technologies).



Immunohistochemistry (Formalin/PFA-fixed paraffin-embedded sections)

Formalin-fixed and paraffin-embedded human hepatocellular carcinoma tissue reacted with PROX1 polyclonal antibody (Cat # PAB1920), which was peroxidase-conjugated to the secondary antibody, followed by DAB staining. This data demonstrates the use of this antibody for immunohistochemistry; clinical relevance has not been evaluated.

Specification

Product Description

Rabbit polyclonal antibody raised against synthetic peptide of PROX1.

Immunogen

A synthetic peptide (conjugated with KLH) corresponding to internal region of human PROX1.

Host	Rabbit
Reactivity	Human
Form	Liquid
Purification	Ammonium sulfate precipitation
Recommend Usage	Western Blot (1:1000) Immunohistochemistry (1:10-50) The optimal working dilution should be determined by the end user.
Storage Buffer	In PBS (0.09% sodium azide)
Storage Instruction	Store at 4°C. For long term storage store at -20°C. Aliquot to avoid repeated freezing and thawing.
Note	This product contains sodium azide: a POISONOUS AND HAZARDOUS SUBSTANCE which should be handled by trained staff only.

Applications

- Western Blot (Cell lysate)

Western blot analysis of PROX1 polyclonal antibody (Cat # PAB1920) in HepG2 cell line lysates (35 ug/lane). PROX1 (arrow) was detected using the purified polyclonal antibody.

- Western Blot (Transfected lysate)

Western blot analysis of PROX1 (arrow) using PROX1 polyclonal antibody (Cat # PAB1920). 293 cell lysates (2 ug/lane) either nontransfected (Lane 1) or transiently transfected with the PROX1 gene (Lane 2) (Origene Technologies).

- Immunohistochemistry (Formalin/PFA-fixed paraffin-embedded sections)

Formalin-fixed and paraffin-embedded human hepatocellular carcinoma tissue reacted with PROX1 polyclonal antibody (Cat # PAB1920), which was peroxidase-conjugated to the secondary antibody, followed by DAB staining. This data demonstrates the use of this antibody for immunohistochemistry; clinical relevance has not been evaluated.

Gene Info — PROX1

Entrez GeneID	5629
Protein Accession#	NP_002754
Gene Name	PROX1
Gene Alias	-

Gene Description	prospero homeobox 1
Omim ID	601546
Gene Ontology	Hyperlink
Other Designations	prospero-related homeobox 1

Publication Reference

- [Mutations and aberrant DNA methylation of the PROX1 gene in hematologic malignancies.](#)

Nagai H, Li Y, Hatano S, Toshihito O, Yuge M, Ito E, Utsumi M, Saito H, Kinoshita T.

Genes, Chromosomes & Cancer 2003 Sep; 38(1):13.

- [Prox1 function controls progenitor cell proliferation and horizontal cell genesis in the mammalian retina.](#)

Dyer MA, Livesey FJ, Cepko CL, Oliver G.

Nature Genetics 2003 May; 34(1):53.

Application: IF, IHC-Fr, Mouse, Mouse retinal progenitor cells, Mouse retina

- [Prox1 is a master control gene in the program specifying lymphatic endothelial cell fate.](#)

Hong YK, Harvey N, Noh YH, Schacht V, Hirakawa S, Detmar M, Oliver G.

Developmental Dynamics 2002 Nov; 225(3):351.

Application: IF, IHC-Fr, WB, Human, Mouse, Human dermal microvascular endothelial cells, Mouse skin

Disease

- [Acquired Immunodeficiency Syndrome](#)
- [Birth Weight](#)
- [Diabetes Mellitus](#)
- [Disease Progression](#)
- [Genetic Predisposition to Disease](#)
- [HIV Infections](#)
- [Lymphedema](#)