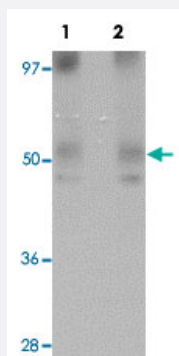


MINA polyclonal antibody

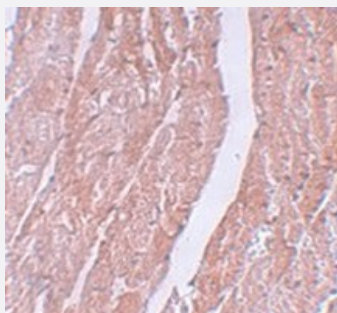
Catalog # PAB19199 Size 100 ug

Applications



Western Blot (Tissue lysate)

Western blot analysis of human heart tissue with MINA polyclonal antibody (Cat # PAB19199) at (Lane 1) 1 and (Lane 2) 2 ug/mL dilution.



Immunohistochemistry

Immunohistochemical staining of mouse heart tissue with MINA polyclonal antibody (Cat # PAB19199) at 5 ug/mL dilution.

Specification

Product Description	Rabbit polyclonal antibody raised against synthetic peptide of MINA.
Immunogen	A synthetic peptide corresponding to 15 amino acids near N-terminus of human MINA.
Host	Rabbit
Reactivity	Human, Mouse
Form	Liquid
Purification	Affinity purification

Concentration	1 mg/mL
Recommend Usage	Western blot (1-2 ug/mL) The optimal working dilution should be determined by the end user.
Storage Buffer	In PBS (0.02% sodium azide)
Storage Instruction	Store at 4°C for three months. For long term storage store at -20°C. Aliquot to avoid repeated freezing and thawing.
Note	This product contains sodium azide: a POISONOUS AND HAZARDOUS SUBSTANCE which should be handled by trained staff only.

Applications

- Western Blot (Tissue lysate)

Western blot analysis of human heart tissue with MINA polyclonal antibody (Cat # PAB19199) at (Lane 1) 1 and (Lane 2) 2 ug/mL dilution.

- Immunohistochemistry

Immunohistochemical staining of mouse heart tissue with MINA polyclonal antibody (Cat # PAB19199) at 5 ug/mL dilution.

- Enzyme-linked Immunoabsorbent Assay

Gene Info — MINA

Entrez GeneID	84864
GeneBank Accession#	NP_694822
Gene Name	MINA
Gene Alias	DKFZp762O1912, FLJ14393, MDIG, MINA53, NO52
Gene Description	MYC induced nuclear antigen
Gene Ontology	Hyperlink
Gene Summary	MINA is a c-Myc (MYC; MIM 190080) target gene that may play a role in cell proliferation or regulation of cell growth. (Tsuneoka et al., 2002 [PubMed 12091391]; Zhang et al., 2005 [PubMed 15897898]).[supplied by OMIM]
Other Designations	mineral dust induced gene protein myc-induced nuclear antigen, 53 kDa