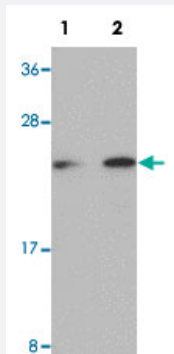


LIN28 polyclonal antibody

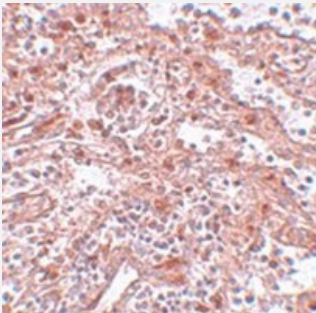
Catalog # PAB19195 Size 100 ug

Applications



Western Blot (Cell lysate)

Western blot analysis of Raji cells with LIN28 polyclonal antibody (Cat # PAB19195) at (Lane 1) 1 and (Lane 2) 2 ug/mL dilution.



Immunohistochemistry

Immunohistochemical staining of human spleen tissue with LIN28 polyclonal antibody (Cat # PAB19195) at 5 ug/mL dilution.

Specification

Product Description	Rabbit polyclonal antibody rasied against synthetic peptide of LIN28.
Immunogen	A synthetic peptide corresponding to 15 amino acids near C-terminus of human LIN28.
Host	Rabbit
Reactivity	Human
Form	Liquid
Purification	Affinity purification

Concentration	1 mg/mL
Recommend Usage	Western blot (1-2 ug/mL) The optimal working dilution should be determined by the end user.
Storage Buffer	In PBS (0.02% sodium azide)
Storage Instruction	Store at 4°C for up to one year. Aliquot to avoid repeated freezing and thawing.
Note	This product contains sodium azide: a POISONOUS AND HAZARDOUS SUBSTANCE which should be handled by trained staff only.

Applications

- Western Blot (Cell lysate)

Western blot analysis of Raji cells with LIN28 polyclonal antibody (Cat # PAB19195) at (Lane 1) 1 and (Lane 2) 2 ug/mL dilution.

- Immunohistochemistry

Immunohistochemical staining of human spleen tissue with LIN28 polyclonal antibody (Cat # PAB19195) at 5 ug/mL dilution.

- Enzyme-linked Immunoabsorbent Assay

Gene Info — LIN28

Entrez GeneID	79727
GeneBank Accession#	EAX07814
Gene Name	LIN28
Gene Alias	CSDD1, FLJ12457, LIN-28, LIN28A, ZCCHC1
Gene Description	lin-28 homolog (C. elegans)
Omim ID	611043
Gene Ontology	Hyperlink
Gene Summary	CCHC domain containing 1
Other Designations	OTTHUMP00000003663 RNA-binding protein LIN-28 lin-28 homolog zinc finger, CCHC domain containing 1