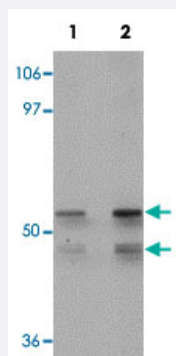


KLF4 polyclonal antibody

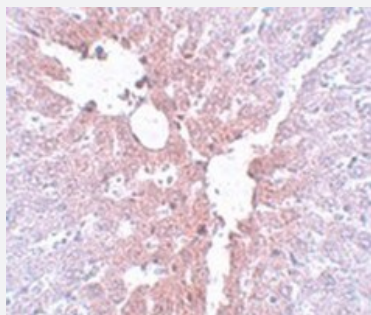
Catalog # PAB19194 Size 100 ug

Applications



Western Blot (Tissue lysate)

Western blot analysis of human liver tissue with KLF4 polyclonal antibody (Cat # PAB19194) at (Lane 1) 1 and (Lane 2) 2 ug/mL dilution.



Immunohistochemistry

Immunohistochemical staining of rat liver tissue with KLF4 polyclonal antibody (Cat # PAB19194) at 5 ug/mL dilution.

Specification

Product Description	Rabbit polyclonal antibody raised against synthetic peptide of KLF4.
Immunogen	A synthetic peptide corresponding to 20 amino acids near C-terminus of human KLF4.
Host	Rabbit
Reactivity	Human, Mouse, Rat
Form	Liquid
Purification	Affinity purification

Concentration	1 mg/mL
Recommend Usage	Western blot (1-2 ug/mL) The optimal working dilution should be determined by the end user.
Storage Buffer	In PBS (0.02% sodium azide)
Storage Instruction	Store at 4°C for three months. For long term storage store at -20°C. Aliquot to avoid repeated freezing and thawing.
Note	This product contains sodium azide: a POISONOUS AND HAZARDOUS SUBSTANCE which should be handled by trained staff only.

Applications

- Western Blot (Tissue lysate)

Western blot analysis of human liver tissue with KLF4 polyclonal antibody (Cat # PAB19194) at (Lane 1) 1 and (Lane 2) 2 ug/mL dilution.

- Immunohistochemistry

Immunohistochemical staining of rat liver tissue with KLF4 polyclonal antibody (Cat # PAB19194) at 5 ug/mL dilution.

- Enzyme-linked Immunoabsorbent Assay

Gene Info — KLF4

Entrez GeneID	9314
GeneBank Accession#	AAH30811
Gene Name	KLF4
Gene Alias	EZF, GKLF
Gene Description	Kruppel-like factor 4 (gut)
Omim ID	602253
Gene Ontology	Hyperlink
Other Designations	OTTHUMP00000021862 endothelial Kruppel-like zinc finger protein

Disease

- [Diabetes Mellitus](#)
- [Genetic Predisposition to Disease](#)