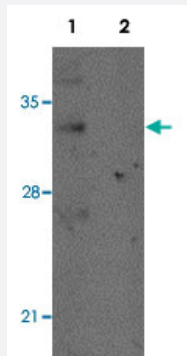


REEP2 polyclonal antibody

Catalog # PAB19179

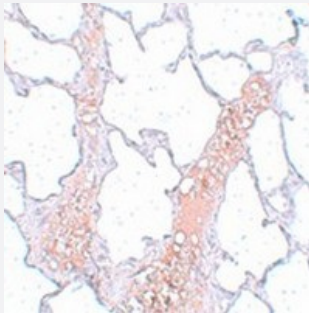
Size 100 ug

Applications



Western Blot (Tissue lysate)

Western blot analysis of mouse lung tissue with REEP2 polyclonal antibody (Cat # PAB19179) at 1 ug/mL in (Lane 1) the absence and (Lane 2) the presence of blocking peptide.



Immunohistochemistry

Immunohistochemical staining of rat lung tissue with REEP2 polyclonal antibody (Cat # PAB19179) at 5 ug/mL dilution.

Specification

Product Description	Rabbit polyclonal antibody rasied against synthetic peptide of REEP2.
Immunogen	A synthetic peptide corresponding to 15 amino acids near center region of human REEP2.
Host	Rabbit
Reactivity	Human, Mouse, Rat
Form	Liquid
Purification	Affinity purification

Concentration	1 mg/mL
Recommend Usage	Western blot (1-2 ug/mL) The optimal working dilution should be determined by the end user.
Storage Buffer	In PBS (0.02% sodium azide)
Storage Instruction	Store at 4°C for three months. For long term storage store at -20°C. Aliquot to avoid repeated freezing and thawing.
Note	This product contains sodium azide: a POISONOUS AND HAZARDOUS SUBSTANCE which should be handled by trained staff only.

Applications

- Western Blot (Tissue lysate)

Western blot analysis of mouse lung tissue with REEP2 polyclonal antibody (Cat # PAB19179) at 1 ug/mL in (Lane 1) the absence and (Lane 2) the presence of blocking peptide.

- Immunohistochemistry

Immunohistochemical staining of rat lung tissue with REEP2 polyclonal antibody (Cat # PAB19179) at 5 ug/mL dilution.

- Enzyme-linked Immunoabsorbent Assay

Gene Info — REEP2

Entrez GeneID	51308
Gene Name	REEP2
Gene Alias	C5orf19, SGC32445
Gene Description	receptor accessory protein 2
Omim ID	609347
Gene Ontology	Hyperlink
Other Designations	receptor expression enhancing protein 2