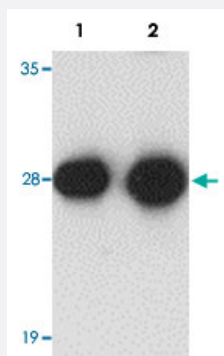


# SYNGR3 polyclonal antibody

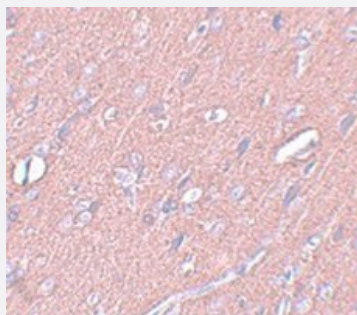
Catalog # PAB19177      Size 100 ug

## Applications



### Western Blot (Tissue lysate)

Western blot analysis of mouse brain tissue with SYNGR3 polyclonal antibody (Cat # PAB19177) at (Lane 1) 1 and (Lane 2) 2 ug/mL dilution.



### Immunohistochemistry

Immunohistochemical staining of rat brain tissue with SYNGR3 polyclonal antibody (Cat # PAB19177) at 25 ug/mL dilution.

## Specification

<b>Product Description</b>	Rabbit polyclonal antibody raised against synthetic peptide of SYNGR3.
<b>Immunogen</b>	A synthetic peptide corresponding to 19 amino acids near C-terminus of human SYNGR3.
<b>Host</b>	Rabbit
<b>Reactivity</b>	Human, Mouse, Rat
<b>Form</b>	Liquid
<b>Purification</b>	Affinity purification

Concentration	1 mg/mL
Recommend Usage	Western blot (1-2 ug/mL) The optimal working dilution should be determined by the end user.
Storage Buffer	In PBS (0.02% sodium azide)
Storage Instruction	Store at 4°C for up to one year. Aliquot to avoid repeated freezing and thawing.
Note	This product contains sodium azide: a POISONOUS AND HAZARDOUS SUBSTANCE which should be handled by trained staff only.

## Applications

- Western Blot (Tissue lysate)

Western blot analysis of mouse brain tissue with SYNGR3 polyclonal antibody (Cat # PAB19177) at (Lane 1) 1 and (Lane 2) 2 ug/mL dilution.

- Immunohistochemistry

Immunohistochemical staining of rat brain tissue with SYNGR3 polyclonal antibody (Cat # PAB19177) at 25 ug/mL dilution.

- Enzyme-linked Immunoabsorbent Assay

## Gene Info — SYNGR3

Entrez GeneID	<a href="#">9143</a>
GeneBank Accession#	<a href="#">NP_004200</a>
Gene Name	SYNGR3
Gene Alias	MGC:20003
Gene Description	synaptogyrin 3
Omim ID	<a href="#">603927</a>
Gene Ontology	<a href="#">Hyperlink</a>
Gene Summary	This gene encodes an integral membrane protein. The gene belongs to the synaptogyrin gene family. Like other members of the family the protein contains four transmembrane regions. The exact function of this protein is unclear. [provided by RefSeq]
Other Designations	-