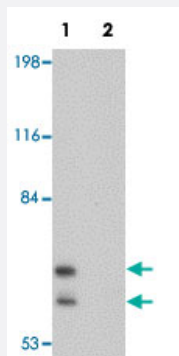


PICALM polyclonal antibody

Catalog # PAB19170 Size 100 ug

Applications



Western Blot (Cell lysate)

Western blot analysis of EL4 cells with PICALM polyclonal antibody (Cat # PAB19170) at 1 ug/mL in (Lane 1) the absence and (Lane 2) the presence of blocking peptide.

Specification

Product Description	Rabbit polyclonal antibody rasied against synthetic peptide of PICALM.
Immunogen	A synthetic peptide corresponding to 15 amino acids near N-terminus of human PICALM.
Host	Rabbit
Reactivity	Human, Mouse, Rat
Form	Liquid
Purification	Affinity purification
Concentration	1 mg/mL
Recommend Usage	Western blot (1-2 ug/mL) The optimal working dilution should be determined by the end user.
Storage Buffer	In PBS (0.02% sodium azide)
Storage Instruction	Store at 4°C for three months. For long term storage store at -20°C. Aliquot to avoid repeated freezing and thawing.

Note

This product contains sodium azide: a POISONOUS AND HAZARDOUS SUBSTANCE which should be handled by trained staff only.

Applications

- Western Blot (Cell lysate)

Western blot analysis of EL4 cells with PICALM polyclonal antibody (Cat # PAB19170) at 1 ug/mL in (Lane 1) the absence and (Lane 2) the presence of blocking peptide.

- Enzyme-linked Immunoabsorbent Assay

Gene Info — PICALM

Entrez GeneID	8301
GeneBank Accession#	NP_009097
Gene Name	PICALM
Gene Alias	CALM, CLTH, LAP
Gene Description	phosphatidylinositol binding clathrin assembly protein
Omim ID	601626 603025
Gene Ontology	Hyperlink
Other Designations	clathrin assembly lymphoid-myeloid leukemia phosphatidylinositol-binding clathrin assembly protein

Disease

- [Alzheimer Disease](#)
- [Cognition Disorders](#)
- [Genetic Predisposition to Disease](#)
- [Neuropsychological Tests](#)