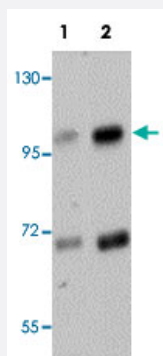


SLFN14 polyclonal antibody

Catalog # PAB19166 Size 100 ug

Applications



Western Blot (Tissue lysate)

Western blot analysis of mouse kidney tissue with SLFN14 polyclonal antibody (Cat # PAB19166) at (Lane 1) 1 and (Lane 2) 2 ug/mL dilution.

Specification

Product Description	Rabbit polyclonal antibody rasied against synthetic peptide of SLFN14.
Immunogen	A synthetic peptide corresponding to 16 amino acids near C-terminus of human SLFN14.
Host	Rabbit
Reactivity	Human, Mouse
Form	Liquid
Purification	Affinity purification
Concentration	1 mg/mL
Recommend Usage	Western blot (1-2 ug/mL) The optimal working dilution should be determined by the end user.
Storage Buffer	In PBS (0.02% sodium azide)
Storage Instruction	Store at 4°C for three months. For long term storage store at -20°C. Aliquot to avoid repeated freezing and thawing.

Note

This product contains sodium azide: a POISONOUS AND HAZARDOUS SUBSTANCE which should be handled by trained staff only.

Applications

- Western Blot (Tissue lysate)

Western blot analysis of mouse kidney tissue with SLFN14 polyclonal antibody (Cat # PAB19166) at (Lane 1) 1 and (Lane 2) 2 ug/mL dilution.

- Enzyme-linked Immunoabsorbent Assay

Gene Info — SLFN14

Entrez GeneID	342618
GeneBank Accession#	NP_001123292
Gene Name	SLFN14
Gene Alias	-
Gene Description	schlafen family member 14
Gene Ontology	Hyperlink
Other Designations	-