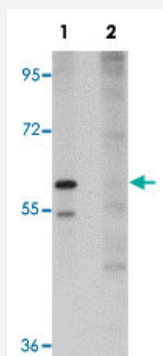


# SLFN12 polyclonal antibody

Catalog # PAB19165      Size 100 ug

## Applications



### Western Blot (Cell lysate)

Western blot analysis of SK-N-SH cells with SLFN12 polyclonal antibody (Cat # PAB19165) at 1 ug/mL in (Lane 1) the absence and (Lane 2) the presence of blocking peptide.

## Specification

<b>Product Description</b>	Rabbit polyclonal antibody rasied against synthetic peptide of SLFN12.
<b>Immunogen</b>	A synthetic peptide corresponding to 12 amino acids near C-terminus of human SLFN12.
<b>Host</b>	Rabbit
<b>Reactivity</b>	Human
<b>Form</b>	Liquid
<b>Purification</b>	Affinity purification
<b>Concentration</b>	1 mg/mL
<b>Recommend Usage</b>	Western blot (1-2 ug/mL) The optimal working dilution should be determined by the end user.
<b>Storage Buffer</b>	In PBS (0.02% sodium azide)
<b>Storage Instruction</b>	Store at 4°C for three months. For long term storage store at -20°C. Aliquot to avoid repeated freezing and thawing.

**Note**

This product contains sodium azide: a POISONOUS AND HAZARDOUS SUBSTANCE which should be handled by trained staff only.

## Applications

- Western Blot (Cell lysate)

Western blot analysis of SK-N-SH cells with SLFN12 polyclonal antibody (Cat # PAB19165) at 1 ug/mL in (Lane 1) the absence and (Lane 2) the presence of blocking peptide.

- Enzyme-linked Immunoabsorbent Assay

## Gene Info — SLFN12

Entrez GeneID	<a href="#">55106</a>
GeneBank Accession#	<a href="#">NP_060512</a>
Gene Name	SLFN12
Gene Alias	FLJ10260, SLFN3
Gene Description	schlafen family member 12
Gene Ontology	<a href="#">Hyperlink</a>
Other Designations	OTTHUMP00000163884