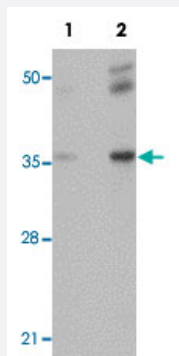


# RHBDD2 polyclonal antibody

Catalog # PAB19162      Size 100 ug

## Applications



### Western Blot (Tissue lysate)

Western blot analysis of rat lung tissue with RHBDD2 polyclonal antibody (Cat # PAB19162) at (Lane 1) 1 and (Lane 2) 2 ug/mL dilution.

## Specification

<b>Product Description</b>	Rabbit polyclonal antibody rasied against synthetic peptide of RHBDD2.
<b>Immunogen</b>	A synthetic peptide corresponding to 18 amino acids near center region of human RHBDD2.
<b>Host</b>	Rabbit
<b>Reactivity</b>	Human, Mouse, Rat
<b>Form</b>	Liquid
<b>Purification</b>	Affinity purification
<b>Concentration</b>	1 mg/mL
<b>Recommend Usage</b>	Western blot (1-2 ug/mL) The optimal working dilution should be determined by the end user.
<b>Storage Buffer</b>	In PBS (0.02% sodium azide)
<b>Storage Instruction</b>	Store at 4°C for three months. For long term storage store at -20°C. Aliquot to avoid repeated freezing and thawing.

**Note**

This product contains sodium azide: a POISONOUS AND HAZARDOUS SUBSTANCE which should be handled by trained staff only.

## Applications

- Western Blot (Tissue lysate)

Western blot analysis of rat lung tissue with RHBDD2 polyclonal antibody (Cat # PAB19162) at (Lane 1) 1 and (Lane 2) 2 ug/mL dilution.

- Enzyme-linked Immunoabsorbent Assay

## Gene Info — RHBDD2

Entrez GeneID	<a href="#">57414</a>
GeneBank Accession#	<a href="#">NP_001035546</a>
Gene Name	RHBDD2
Gene Alias	NPD007, RHBDL7
Gene Description	rhomboid domain containing 2
Gene Ontology	<a href="#">Hyperlink</a>
Gene Summary	veinlet-like 7
Other Designations	H_RG122E10.2a H_RG122E10.2b WUGSC:H_RG122E10.2a WUGSC:H_RG122E10.2b rhomboid, veinlet-like 7