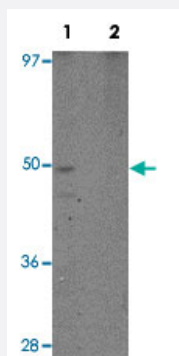


RHBDD1 polyclonal antibody

Catalog # PAB19161

Size 100 ug

Applications



Western Blot (Cell lysate)

Western blot analysis of K-562 cells with RHBDD1 polyclonal antibody (Cat # PAB19161) at 1 ug/mL in (Lane 1) the absence and (Lane 2) the presence of blocking peptide.

Specification

Product Description	Rabbit polyclonal antibody raised against synthetic peptide of RHBDD1.
Immunogen	A synthetic peptide corresponding to 14 amino acids near C-terminus of human RHBDD1.
Host	Rabbit
Reactivity	Human, Mouse
Form	Liquid
Purification	Affinity purification
Concentration	1 mg/mL
Recommend Usage	Western blot (1-2 ug/mL) The optimal working dilution should be determined by the end user.
Storage Buffer	In PBS (0.02% sodium azide)
Storage Instruction	Store at 4°C for three months. For long term storage store at -20°C. Aliquot to avoid repeated freezing and thawing.

Note

This product contains sodium azide: a POISONOUS AND HAZARDOUS SUBSTANCE which should be handled by trained staff only.

Applications

- Western Blot (Cell lysate)

Western blot analysis of K-562 cells with RHBDD1 polyclonal antibody (Cat # PAB19161) at 1 ug/mL in (Lane 1) the absence and (Lane 2) the presence of blocking peptide.

- Enzyme-linked Immunoabsorbent Assay

Gene Info — RHBDD1

Entrez GeneID	84236
GeneBank Accession#	AAI01265
Gene Name	RHBDD1
Gene Alias	DKFZp547E052, MGC117258
Gene Description	rhomboid domain containing 1
Gene Ontology	Hyperlink
Other Designations	-