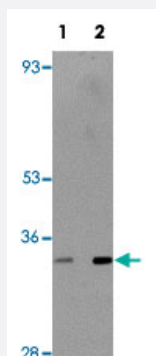


TMEM38B polyclonal antibody

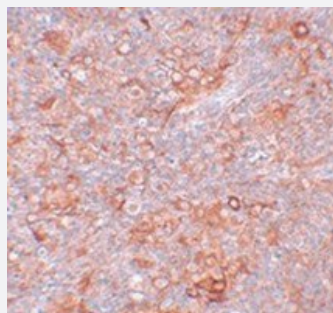
Catalog # PAB19160 Size 100 ug

Applications



Western Blot (Tissue lysate)

Western blot analysis of rat thymus tissue with TMEM38B polyclonal antibody (Cat # PAB19160) at (Lane 1) 1 and (Lane 2) 2 ug/mL dilution.



Immunohistochemistry

Immunohistochemical staining of mouse thymus tissue with TMEM38B polyclonal antibody (Cat # PAB19160) at 5 ug/mL dilution.

Specification

Product Description	Rabbit polyclonal antibody raised against synthetic peptide of TMEM38B.
Immunogen	A synthetic peptide corresponding to 17 amino acids near C-terminus of human TMEM38B.
Host	Rabbit
Reactivity	Human, Mouse, Rat
Form	Liquid
Purification	Affinity purification

Concentration	1 mg/mL
Recommend Usage	Western blot (1-2 ug/mL) The optimal working dilution should be determined by the end user.
Storage Buffer	In PBS (0.02% sodium azide)
Storage Instruction	Store at 4°C for three months. For long term storage store at -20°C. Aliquot to avoid repeated freezing and thawing.
Note	This product contains sodium azide: a POISONOUS AND HAZARDOUS SUBSTANCE which should be handled by trained staff only.

Applications

- Western Blot (Tissue lysate)

Western blot analysis of rat thymus tissue with TMEM38B polyclonal antibody (Cat # PAB19160) at (Lane 1) 1 and (Lane 2) 2 ug/mL dilution.

- Immunohistochemistry

Immunohistochemical staining of mouse thymus tissue with TMEM38B polyclonal antibody (Cat # PAB19160) at 5 ug/mL dilution.

- Enzyme-linked Immunoabsorbent Assay

Gene Info — TMEM38B

Entrez GeneID	55151
GeneBank Accession#	NP_060582
Gene Name	TMEM38B
Gene Alias	C9orf87, D4Ert89e, FLJ10493, TRICB, bA219P18.1
Gene Description	transmembrane protein 38B
Omim ID	611236
Gene Ontology	Hyperlink
Other Designations	OTTHUMP000000021849 OTTHUMP000000063855

Disease

- [Cleft Lip](#)
- [Cleft Palate](#)
- [Genetic Predisposition to Disease](#)
- [Obesity](#)
- [Tooth Abnormalities](#)