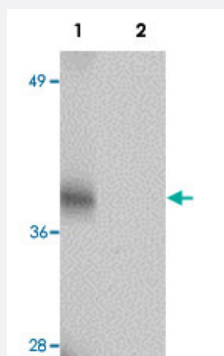


# TMEM38A polyclonal antibody

Catalog # PAB19159      Size 100 ug

## Applications



### Western Blot (Tissue lysate)

Western blot analysis of rat skeletal muscle tissue with TMEM38A polyclonal antibody (Cat # PAB19159) at 1 ug/mL in (Lane 1) the absence and (Lane 2) the presence of blocking peptide.

## Specification

<b>Product Description</b>	Rabbit polyclonal antibody raised against synthetic peptide of TMEM38A.
<b>Immunogen</b>	A synthetic peptide corresponding to 17 amino acids near C-terminus of human TMEM38A.
<b>Host</b>	Rabbit
<b>Reactivity</b>	Human, Mouse, Rat
<b>Form</b>	Liquid
<b>Purification</b>	Affinity purification
<b>Concentration</b>	1 mg/mL
<b>Recommend Usage</b>	Western blot (1-2 ug/mL) The optimal working dilution should be determined by the end user.
<b>Storage Buffer</b>	In PBS (0.02% sodium azide)
<b>Storage Instruction</b>	Store at 4°C for three months. For long term storage store at -20°C. Aliquot to avoid repeated freezing and thawing.

**Note**

This product contains sodium azide: a POISONOUS AND HAZARDOUS SUBSTANCE which should be handled by trained staff only.

## Applications

- Western Blot (Tissue lysate)

Western blot analysis of rat skeletal muscle tissue with TMEM38A polyclonal antibody (Cat # PAB19159) at 1 ug/mL in (Lane 1) the absence and (Lane 2) the presence of blocking peptide.

- Enzyme-linked Immunoabsorbent Assay

## Gene Info — TMEM38A

Entrez GeneID	<a href="#">79041</a>
---------------	-----------------------

GeneBank Accession#	<a href="#">AAH01195</a>
---------------------	--------------------------

Gene Name	TMEM38A
-----------	---------

Gene Alias	MGC3169, TRICA
------------	----------------

Gene Description	transmembrane protein 38A
------------------	---------------------------

Omim ID	<a href="#">611235</a>
---------	------------------------

Gene Ontology	<a href="#">Hyperlink</a>
---------------	---------------------------

Other Designations	-
--------------------	---

## Disease

- [Cardiovascular Diseases](#)
- [Diabetes Mellitus](#)
- [Edema](#)