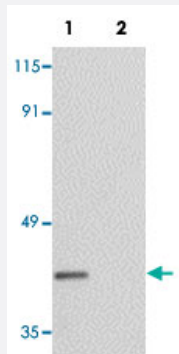


PPAPDC2 polyclonal antibody

Catalog # PAB19157 Size 100 ug

Applications



Western Blot (Cell lysate)

Western blot analysis of Raji cells with PPAPDC2 polyclonal antibody (Cat # PAB19157) at 1 ug/mL in (Lane 1) the absence and (Lane 2) the presence of blocking peptide.

Specification

| | |
|----------------------------|---|
| Product Description | Rabbit polyclonal antibody raised against synthetic peptide of PPAPDC2. |
| Immunogen | A synthetic peptide corresponding to 13 amino acids near C-terminus of human PPAPDC2. |
| Host | Rabbit |
| Reactivity | Human, Mouse, Rat |
| Form | Liquid |
| Purification | Affinity purification |
| Concentration | 1 mg/mL |
| Recommend Usage | Western blot (1-2 ug/mL) The optimal working dilution should be determined by the end user. |
| Storage Buffer | In PBS (0.02% sodium azide) |
| Storage Instruction | Store at 4°C for three months. For long term storage store at -20°C. Aliquot to avoid repeated freezing and thawing. |

Note

This product contains sodium azide: a POISONOUS AND HAZARDOUS SUBSTANCE which should be handled by trained staff only.

Applications

- Western Blot (Cell lysate)

Western blot analysis of Raji cells with PPAPDC2 polyclonal antibody (Cat # PAB19157) at 1 ug/mL in (Lane 1) the absence and (Lane 2) the presence of blocking peptide.

- Enzyme-linked Immunoabsorbent Assay

Gene Info — PPAPDC2

| | |
|---------------|------------------------|
| Entrez GeneID | 403313 |
|---------------|------------------------|

| | |
|---------------------|---------------------------|
| GeneBank Accession# | NP_982278 |
|---------------------|---------------------------|

| | |
|-----------|---------|
| Gene Name | PPAPDC2 |
|-----------|---------|

| | |
|------------|--|
| Gene Alias | FLJ46512, FLJ90191, MGC15483, PSDP, bA6J24.6 |
|------------|--|

| | |
|------------------|--|
| Gene Description | phosphatidic acid phosphatase type 2 domain containing 2 |
|------------------|--|

| | |
|---------|------------------------|
| Omim ID | 611666 |
|---------|------------------------|

| | |
|---------------|---------------------------|
| Gene Ontology | Hyperlink |
|---------------|---------------------------|

| | |
|--------------------|--|
| Other Designations | OTTHUMP00000021003 presqualene diphosphate |
|--------------------|--|