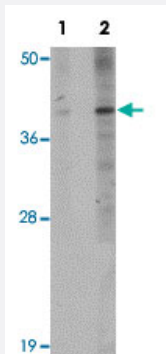


PPAPDC1B polyclonal antibody

Catalog # PAB19156 Size 100 ug

Applications



Western Blot (Cell lysate)

Western blot analysis of EL4 cells with PPAPDC1B polyclonal antibody (Cat # PAB19156) at (Lane 1) 1 and (Lane 2) 2 ug/mL dilution.

Specification

Product Description	Rabbit polyclonal antibody rasied against synthetic peptide of PPAPDC1B.
Immunogen	A synthetic peptide corresponding to 14 amino acids near N-terminus of human PPAPDC1B.
Host	Rabbit
Reactivity	Human, Mouse
Form	Liquid
Purification	Affinity purification
Concentration	1 mg/mL
Recommend Usage	Western blot (1-2 ug/mL) The optimal working dilution should be determined by the end user.
Storage Buffer	In PBS (0.02% sodium azide)
Storage Instruction	Store at 4°C for three months. For long term storage store at -20°C. Aliquot to avoid repeated freezing and thawing.

Note

This product contains sodium azide: a POISONOUS AND HAZARDOUS SUBSTANCE which should be handled by trained staff only.

Applications

- Western Blot (Cell lysate)

Western blot analysis of EL4 cells with PPAPDC1B polyclonal antibody (Cat # PAB19156) at (Lane 1) 1 and (Lane 2) 2 ug/mL dilution.

- Enzyme-linked Immunoabsorbent Assay

Gene Info — PPAPDC1B

Entrez GeneID	84513
---------------	-----------------------

GeneBank Accession#	NP_001096029
---------------------	------------------------------

Gene Name	PPAPDC1B
-----------	----------

Gene Alias	DPPL1, HTPAP
------------	--------------

Gene Description	phosphatidic acid phosphatase type 2 domain containing 1B
------------------	-----------------------------------------------------------

Omim ID	610626
---------	------------------------

Gene Ontology	Hyperlink
---------------	---------------------------

Other Designations	diacylglycerol pyrophosphate like 1
--------------------	-------------------------------------