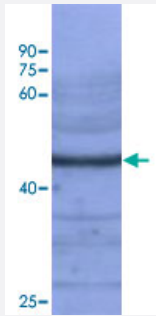


Os01g0674500 polyclonal antibody

Catalog # PAB19137 Size 100 uL

Applications



Western Blot (Tissue lysate)

Western blot analysis of rice leaf tissue at seeding stage with Os01g0674500 polyclonal antibody (Cat # PAB19137) at 1:10000 dilution.

Specification

Product Description Rabbit polyclonal antibody raised against synthetic peptide of Os01g0674500.

Immunogen A synthetic peptide corresponding to *Oryza sativa* Os01g0674500.

Host Rabbit

Reactivity Rice

Specificity It recognizes HSP in rice tissue lysate.

Form Liquid

Recommend Usage Western blot (1:1000)
The optimal working dilution should be determined by the end user.

Storage Buffer In serum

Storage Instruction Store at 4°C. For long term storage store at -20°C.
Aliquot to avoid repeated freezing and thawing.

Applications

- Western Blot (Tissue lysate)

Western blot analysis of rice leaf tissue at seeding stage with Os01g0674500 polyclonal antibody (Cat # PAB19137) at 1:10000 dilution.

Gene Info — Os01g0674500

Entrez GeneID	4325911
Gene Name	Os01g0674500
Gene Alias	-
Gene Description	Os01g0674500
Gene Ontology	Hyperlink
Other Designations	hypothetical protein