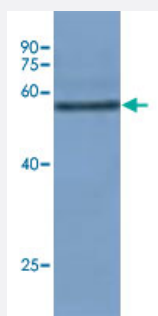


Os08g0103300 polyclonal antibody

Catalog # PAB19135

Size 100 uL

Applications



Western Blot (Tissue lysate)

Western blot analysis of rice leaf tissue at seeding stage with Os08g0103300 polyclonal antibody (Cat # PAB19135) at 1:10000 dilution.

Specification

Product Description Rabbit polyclonal antibody raised against synthetic peptide of Os08g0103300.

Immunogen A synthetic peptide corresponding to *Oryza sativa* Os08g0103300.

Host Rabbit

Reactivity Rice

Specificity It recognizes HSP in rice tissue lysate.

Form Liquid

Recommend Usage Western blot (1:1000)
The optimal working dilution should be determined by the end user.

Storage Buffer In serum

Storage Instruction Store at 4°C. For long term storage store at -20°C.
Aliquot to avoid repeated freezing and thawing.

Applications

- Western Blot (Tissue lysate)

Western blot analysis of rice leaf tissue at seeding stage with Os08g0103300 polyclonal antibody (Cat # PAB19135) at 1:10000 dilution.

Gene Info — Os08g0103300

Entrez GeneID	4344429
---------------	-------------------------

Gene Name	Os08g0103300
-----------	--------------

Gene Alias	-
------------	---

Gene Description	Os08g0103300
------------------	--------------

Gene Ontology	Hyperlink
---------------	---------------------------

Other Designations	hypothetical protein
--------------------	----------------------