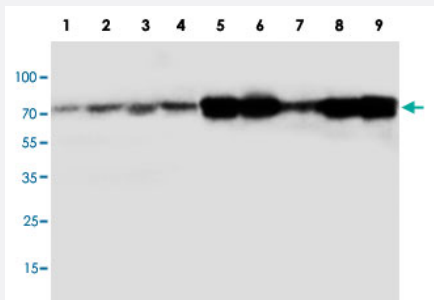


# CAPN1 polyclonal antibody

Catalog # PAB19099      Size 100 ug

## Applications



### Western Blot

Western blot analysis of tissue and whole cell extracts with CAPN1 polyclonal antibody (Cat # PAB19099).

Lane 1 : rat brain. Lane 2 : rat heart. Lane 3 : rat testis. Lane 4 : rat thymus.  
Lane 5 : MM231. Lane 6 : HeLa. Lane 7 : SMMC. Lane 8 : HT1080. Lane 9 : Colo 320 HSR.

## Specification

<b>Product Description</b>	Rabbit polyclonal antibody raised against synthetic peptide of CAPN1.
<b>Immunogen</b>	A synthetic peptide corresponding to internal region of human CAPN1.
<b>Host</b>	Rabbit
<b>Reactivity</b>	Human, Mouse, Rat
<b>Form</b>	Lyophilized
<b>Purification</b>	Immunoaffinity purification
<b>Isotype</b>	IgG
<b>Recommend Usage</b>	Western Blot (1 ug/mL) Immunohistochemistry (Formalin/PFA-fixed paraffin-embedded sections) (1 ug/mL) The optimal working dilution should be determined by the end user.
<b>Storage Buffer</b>	Lyophilized from 0.9 mg NaCl, 0.2 mg Na <sub>2</sub> HPO <sub>4</sub> (5 mg BSA, 0.05 mg sodium azide, 0.05 mg Thimerosal)

## Storage Instruction

Store at -20°C on dry atmosphere.  
After reconstitution with 200 uL of deionized water and concentration will be 500 ug/mL, store at -20°C or lower.  
Aliquot to avoid repeated freezing and thawing.

## Note

This product contains sodium azide and thimerosal: POISONOUS AND HAZARDOUS SUBSTANCE which should be handled by trained staff only.

## Applications

- Western Blot

Western blot analysis of tissue and whole cell extracts with CAPN1 polyclonal antibody (Cat # PAB19099).

Lane 1 : rat brain. Lane 2 : rat heart. Lane 3 : rat testis. Lane 4 : rat thymus.

Lane 5 : MM231. Lane 6 : HeLa. Lane 7 : SMMC. Lane 8 : HT1080. Lane 9 : Colo 320 HSR.

- Immunohistochemistry (Formalin/PFA-fixed paraffin-embedded sections)

## Gene Info — CAPN1

### Entrez GeneID

[823](#)

### Gene Name

CAPN1

### Gene Alias

CANP, CANP1, CANPL1, muCANP, muCL

### Gene Description

calpain 1, (mu/l) large subunit

### Omim ID

[114220](#)

### Gene Ontology

[Hyperlink](#)

### Gene Summary

The calpains, calcium-activated neutral proteases, are nonlysosomal, intracellular cysteine proteases. The mammalian calpains include ubiquitous, stomach-specific, and muscle-specific proteins. The ubiquitous enzymes consist of heterodimers with distinct large, catalytic subunits associated with a common small, regulatory subunit. This gene encodes the large subunit of the ubiquitous enzyme, calpain 1. [provided by RefSeq]

### Other Designations

calcium-activated neutral proteinase|calpain 1, large subunit|calpain, large polypeptide L1|cell proliferation-inducing protein 30

## Pathway

- [Apoptosis](#)