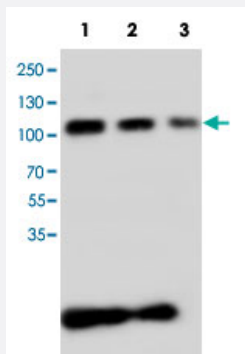


# CDH3 polyclonal antibody

Catalog # PAB19098      Size 100 ug

## Applications



### Western Blot (Recombinant protein)

Western blot analysis of CDH3 recombinant protein with CDH3 polyclonal antibody (Cat # PAB19098).

Lane 1 : 10 ng.

Lane 2 : 5 ng.

Lane 3 : 2.5 ng.

## Specification

<b>Product Description</b>	Rabbit polyclonal antibody raised against synthetic peptide of CDH3.
<b>Immunogen</b>	A synthetic peptide corresponding to internal region of human CDH3.
<b>Host</b>	Rabbit
<b>Reactivity</b>	Human
<b>Form</b>	Lyophilized
<b>Purification</b>	Immunoaffinity purification
<b>Isotype</b>	IgG
<b>Recommend Usage</b>	Western Blot (1 ug/mL) Immunohistochemistry (Formalin/PFA-fixed paraffin-embedded sections) (1 ug/mL) Immunocytochemistry (1 ug/mL) The optimal working dilution should be determined by the end user.
<b>Storage Buffer</b>	Lyophilized from 0.9 mg NaCl, 0.2 mg Na <sub>2</sub> HPO <sub>4</sub> (5 mg BSA, 0.05 mg sodium azide, 0.05 mg Thimerosal)

**Storage Instruction**

Store at -20°C on dry atmosphere.

After reconstitution with 200 uL of deionized water and concentration will be 500 ug/mL, store at -20°C or lower.

Aliquot to avoid repeated freezing and thawing.

**Note**

This product contains sodium azide and thimerosal: POISONOUS AND HAZARDOUS SUBSTANCE which should be handled by trained staff only.

## Applications

- Western Blot (Recombinant protein)

Western blot analysis of CDH3 recombinant protein with CDH3 polyclonal antibody (Cat # PAB19098).

Lane 1 : 10 ng.

Lane 2 : 5 ng.

Lane 3 : 2.5 ng.

- Immunohistochemistry (Formalin/PFA-fixed paraffin-embedded sections)

- Immunocytochemistry

## Gene Info — CDH3

**Entrez GeneID**[1001](#)**Gene Name**

CDH3

**Gene Alias**

CDHP, HJMD, PCAD

**Gene Description**

cadherin 3, type 1, P-cadherin (placental)

**Omim ID**[114021](#) [601553](#)**Gene Ontology**[Hyperlink](#)**Gene Summary**

This gene is a classical cadherin from the cadherin superfamily. The encoded protein is a calcium-dependent cell-cell adhesion glycoprotein comprised of five extracellular cadherin repeats, a transmembrane region and a highly conserved cytoplasmic tail. This gene is located in a six-cadherin cluster in a region on the long arm of chromosome 16 that is involved in loss of heterozygosity events in breast and prostate cancer. In addition, aberrant expression of this protein is observed in cervical adenocarcinomas. Mutations in this gene have been associated with congenital hypotrichosis with juvenile macular dystrophy. [provided by RefSeq]

**Other Designations**

cadherin 3, type 1|calcium-dependent adhesion protein, placental

## Pathway

- [Cell adhesion molecules \(CAMs\)](#)

## Disease

- [Colitis](#)
- [Genetic Predisposition to Disease](#)