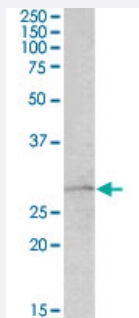


ARHGDIA polyclonal antibody

Catalog # PAB19057 Size 100 ug

Applications



Western Blot (Tissue lysate)

ARHGDIA polyclonal antibody (Cat # PAB19057) (1 ug/mL) staining of mouse lung lysate (35 ug protein in RIPA buffer). Primary incubation was 1 hour. Detected by chemiluminescence.

Specification

Product Description	Goat polyclonal antibody raised against synthetic peptide of ARHGDIA.
Immunogen	A synthetic peptide corresponding to amino acids at internal region of human ARHGDIA.
Sequence	C-QLAQIAAENE
Host	Goat
Theoretical MW (kDa)	28
Reactivity	Mouse, Rat
Form	Liquid
Purification	Antigen affinity purification
Concentration	0.5 mg/mL
Recommend Usage	ELISA (1:8000) Western Blot (1-3 ug/mL) The optimal working dilution should be determined by the end user.
Storage Buffer	In Tris saline, pH7.3 (0.5% BSA, 0.02% sodium azide)

Storage Instruction

Store at -20°C.
Aliquot to avoid repeated freezing and thawing.

Note

This product contains sodium azide: a POISONOUS AND HAZARDOUS SUBSTANCE which should be handled by trained staff only.

Applications

- Western Blot (Tissue lysate)

ARHGDI polyclonal antibody (Cat # PAB19057) (1 ug/mL) staining of mouse lung lysate (35 ug protein in RIPA buffer). Primary incubation was 1 hour. Detected by chemiluminescence.

- Enzyme-linked Immunoabsorbent Assay

Gene Info — ARHGDI

Entrez GeneID[396](#)**Protein Accession#**[NP_004300.1](#)**Gene Name**

ARHGDI

Gene Alias

GDI1, MGC117248, RHOGDI, RHOGDI-1

Gene Description

Rho GDP dissociation inhibitor (GDI) alpha

Omim ID[601925](#)**Gene Ontology**[Hyperlink](#)**Gene Summary**

Aplysia Ras-related homologs (ARHs), also called Rho genes, belong to the RAS gene superfamily encoding small guanine nucleotide exchange (GTP/GDP) factors. The ARH proteins may be kept in the inactive, GDP-bound state by interaction with GDP dissociation inhibitors, such as ARHGDI (Leffers et al., 1993 [PubMed 8262133]).[supplied by OMIM]

Other Designations

-

Pathway

- [Neurotrophin signaling pathway](#)