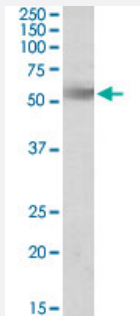


Rhbg polyclonal antibody

Catalog # PAB19050 Size 100 ug

Applications



Western Blot (Cell lysate)

Rhbg polyclonal antibody (Cat # PAB19050) (1 ug/mL) staining of NSO lysate (35 ug protein in RIPA buffer). Primary incubation was 1 hour. Detected by chemiluminescence.

Specification

Product Description	Goat polyclonal antibody raised against synthetic peptide of Rhbg.
Immunogen	A synthetic peptide corresponding to amino acids at C-terminus of mouse Rhbg.
Sequence	C-PLRGGESDTR
Host	Goat
Theoretical MW (kDa)	55
Reactivity	Mouse
Form	Liquid
Purification	Antigen affinity purification
Concentration	0.5 mg/mL
Recommend Usage	ELISA (1:1000) Western Blot (1-3 ug/mL) The optimal working dilution should be determined by the end user.
Storage Buffer	In Tris saline, pH7.3 (0.5% BSA, 0.02% sodium azide)

Storage Instruction

Store at -20°C.
Aliquot to avoid repeated freezing and thawing.

Note

This product contains sodium azide: a POISONOUS AND HAZARDOUS SUBSTANCE which should be handled by trained staff only.

Applications

- Western Blot (Cell lysate)

Rhbg polyclonal antibody (Cat # PAB19050) (1 ug/mL) staining of NSO lysate (35 ug protein in RIPA buffer). Primary incubation was 1 hour. Detected by chemiluminescence.

- Enzyme-linked Immunoabsorbent Assay

Gene Info — Rhbg

Entrez GeneID[58176](#)**Protein Accession#**[NP_067350.2](#)**Gene Name**

Rhbg

Gene Alias

-

Gene Description

Rhesus blood group-associated B glycoprotein

Gene Ontology[Hyperlink](#)**Other Designations**

Rh type B glycoprotein