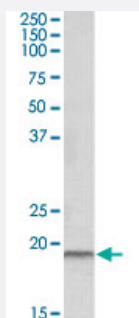


SPINT2 polyclonal antibody

Catalog # PAB19048

Size 100 ug

Applications



Western Blot (Tissue lysate)

SPINT2 polyclonal antibody (Cat # PAB19048) (0.3 ug/mL) staining of human placenta lysate (35 ug protein in RIPA buffer). Primary incubation was 1 hour. Detected by chemiluminescence.

Specification

Product Description	Goat polyclonal antibody raised against synthetic peptide of SPINT2.
Immunogen	A synthetic peptide corresponding to amino acids at internal region of human SPINT2.
Sequence	C-PSAPRRQDSEDH
Host	Goat
Theoretical MW (kDa)	19
Reactivity	Human
Form	Liquid
Purification	Antigen affinity purification
Concentration	0.5 mg/mL
Recommend Usage	ELISA (1:16000) Western Blot (0.3-1 ug/mL) The optimal working dilution should be determined by the end user.
Storage Buffer	In Tris saline, pH7.3 (0.5% BSA, 0.02% sodium azide)

Storage Instruction

Store at -20°C.
Aliquot to avoid repeated freezing and thawing.

Note

This product contains sodium azide: a POISONOUS AND HAZARDOUS SUBSTANCE which should be handled by trained staff only.

Applications

- Western Blot (Tissue lysate)

SPINT2 polyclonal antibody (Cat # PAB19048) (0.3 ug/mL) staining of human placenta lysate (35 ug protein in RIPA buffer). Primary incubation was 1 hour. Detected by chemiluminescence.

- Enzyme-linked Immunoabsorbent Assay

Gene Info — SPINT2

Entrez GeneID[10653](#)**Protein Accession#**[NP_066925.1;NP_001159575.1](#)**Gene Name**

SPINT2

Gene Alias

FLJ45571, HAI-2, HAI2, Kop, PB

Gene Description

serine peptidase inhibitor, Kunitz type, 2

Omim ID[605124](#)**Gene Ontology**[Hyperlink](#)**Gene Summary**

Kunitz type

Other Designations

Kunitz-type serine protease inhibitor|hepatocyte growth factor activator inhibitor type 2|placental biokunin|serine protease inhibitor, Kunitz type, 2