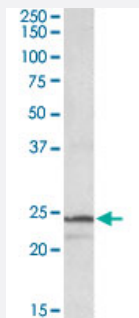


PSMB3 polyclonal antibody

Catalog # PAB19047 Size 100 ug

Applications



Western Blot (Cell lysate)

PSMB3 polyclonal antibody (Cat # PAB19047) (1 ug/mL) staining of K-562 lysate (35 ug protein in RIPA buffer). Primary incubation was 1 hour. Detected by chemiluminescence.

Specification

Product Description	Goat polyclonal antibody raised against synthetic peptide of PSMB3.
Immunogen	A synthetic peptide corresponding to amino acids at internal region of human PSMB3.
Sequence	C-NLYELKEGRQ
Host	Goat
Theoretical MW (kDa)	24
Reactivity	Human
Form	Liquid
Purification	Antigen affinity purification
Concentration	0.5 mg/mL
Recommend Usage	ELISA (1:16000) Western Blot (1-3 ug/mL) The optimal working dilution should be determined by the end user.
Storage Buffer	In Tris saline, pH7.3 (0.5% BSA, 0.02% sodium azide)

Storage Instruction

Store at -20°C.
Aliquot to avoid repeated freezing and thawing.

Note

This product contains sodium azide: a POISONOUS AND HAZARDOUS SUBSTANCE which should be handled by trained staff only.

Applications

- Western Blot (Cell lysate)

PSMB3 polyclonal antibody (Cat # PAB19047) (1 ug/mL) staining of K-562 lysate (35 ug protein in RIPA buffer). Primary incubation was 1 hour. Detected by chemiluminescence.

- Enzyme-linked Immunoabsorbent Assay

Gene Info — PSMB3

Entrez GeneID[5691](#)**Protein Accession#**[NP_002786.2](#)**Gene Name**

PSMB3

Gene Alias

HC10-II, MGC4147

Gene Description

proteasome (prosome, macropain) subunit, beta type, 3

Omim ID[602176](#)**Gene Ontology**[Hyperlink](#)**Gene Summary**

The proteasome is a multicatalytic proteinase complex with a highly ordered ring-shaped 20S core structure. The core structure is composed of 4 rings of 28 non-identical subunits; 2 rings are composed of 7 alpha subunits and 2 rings are composed of 7 beta subunits. Proteasomes are distributed throughout eukaryotic cells at a high concentration and cleave peptides in an ATP/ubiquitin-dependent process in a non-lysosomal pathway. An essential function of a modified proteasome, the immunoproteasome, is the processing of class I MHC peptides. This gene encodes a member of the proteasome B-type family, also known as the T1B family, that is a 20S core beta subunit. Pseudogenes have been identified on chromosomes 2 and 12. [provided by RefSeq]

Other Designations

proteasome beta 3 subunit|proteasome chain 13|proteasome component C10-II|proteasome theta chain

Pathway

- [Proteasome](#)