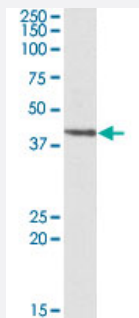


PSMB7 polyclonal antibody

Catalog # PAB19046

Size 100 ug

Applications



Western Blot (Cell lysate)

PSMB7 polyclonal antibody (Cat # PAB19046) (0.3 ug/mL) staining of HEK293 lysate (35 ug protein in RIPA buffer). Primary incubation was 1 hour. Detected by chemiluminescence.

Specification

Product Description	Goat polyclonal antibody raised against synthetic peptide of PSMB7.
Immunogen	A synthetic peptide corresponding to amino acids at internal region of human PSMB7.
Sequence	C-RNAVLEADFAKR
Host	Goat
Theoretical MW (kDa)	40
Reactivity	Human, Mouse
Form	Liquid
Purification	Antigen affinity purification
Concentration	0.5 mg/mL
Recommend Usage	ELISA (1:32000) Western Blot (0.3-1 ug/mL) The optimal working dilution should be determined by the end user.
Storage Buffer	In Tris saline, pH7.3 (0.5% BSA, 0.02% sodium azide)

Storage Instruction

Store at -20°C.
Aliquot to avoid repeated freezing and thawing.

Note

This product contains sodium azide: a POISONOUS AND HAZARDOUS SUBSTANCE which should be handled by trained staff only.

Applications

- Western Blot (Cell lysate)

PSMB7 polyclonal antibody (Cat # PAB19046) (0.3 ug/mL) staining of HEK293 lysate (35 ug protein in RIPA buffer). Primary incubation was 1 hour. Detected by chemiluminescence.

- Enzyme-linked Immunoabsorbent Assay

Gene Info — PSMB7

Entrez GeneID
[5695](#)
Protein Accession#
[NP_002790.1](#)
Gene Name

PSMB7

Gene Alias

Z

Gene Description

proteasome (prosome, macropain) subunit, beta type, 7

Omim ID
[604030](#)
Gene Ontology
[Hyperlink](#)
Gene Summary

The proteasome is a multicatalytic proteinase complex with a highly ordered ring-shaped 20S core structure. The core structure is composed of 4 rings of 28 non-identical subunits; 2 rings are composed of 7 alpha subunits and 2 rings are composed of 7 beta subunits. Proteasomes are distributed throughout eukaryotic cells at a high concentration and cleave peptides in an ATP/ubiquitin-dependent process in a non-lysosomal pathway. An essential function of a modified proteasome, the immunoproteasome, is the processing of class I MHC peptides. This gene encodes a member of the proteasome B-type family, also known as the T1B family, that is a 20S core beta subunit in the proteasome. Expression of this catalytic subunit is downregulated by gamma interferon and proteolytic processing is required to generate a mature subunit. This subunit is not present in the immunoproteasome and is replaced by catalytic subunit 2i (proteasome beta 10 subunit). [provided by RefSeq]

Other Designations

OTTHUMP00000022798|macropain chain Z|multicatalytic endopeptidase complex chain Z|proteasome beta 7 subunit|proteasome catalytic subunit 2|proteasome subunit Z|proteasome subunit alpha|proteasome subunit beta 7

Pathway

- [Proteasome](#)

Disease

- [Kidney Failure](#)
- [Tobacco Use Disorder](#)