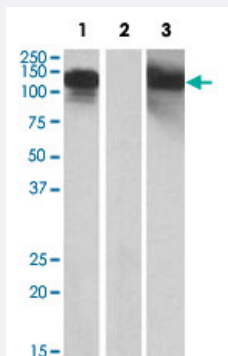


# CDH11 polyclonal antibody

Catalog # PAB19043      Size 100 ug

## Applications



### Western Blot (Transfected lysate)

HEK293 lysate (10 ug protein in RIPA buffer) overexpressing human CDH11 with C-terminal MYC tag probed with CDH11 polyclonal antibody (Cat # PAB19043) (1 ug/mL) in Lane 1 and probed with anti-MYC Tag (1/1000) in Lane 3. Mock-transfected HEK293 probed with CDH11 polyclonal antibody (Cat # PAB19043) (1 mg/mL) in Lane 2. Primary incubations were for 1 hour. Detected by chemiluminescence.

## Specification

Product Description	Goat polyclonal antibody raised against synthetic peptide of CDH11.
Immunogen	A synthetic peptide corresponding to amino acids 497-509 at internal region of human CDH11.
Sequence	CESDQTKPLSNQP
Host	Goat
Theoretical MW (kDa)	130
Reactivity	Human
Form	Liquid
Purification	Antigen affinity purification
Concentration	0.5 mg/mL
Recommend Usage	ELISA (1:8000) Western Blot (0.1-0.5 ug/mL) The optimal working dilution should be determined by the end user.

<b>Storage Buffer</b>	In Tris saline, pH7.3 (0.5% BSA, 0.02% sodium azide)
<b>Storage Instruction</b>	Store at -20°C. Aliquot to avoid repeated freezing and thawing.
<b>Note</b>	This product contains sodium azide: a POISONOUS AND HAZARDOUS SUBSTANCE which should be handled by trained staff only.

## Applications

- Western Blot (Transfected lysate)

HEK293 lysate (10 ug protein in RIPA buffer) overexpressing human CDH11 with C-terminal MYC tag probed with CDH11 polyclonal antibody (Cat # PAB19043) (1 ug/mL) in Lane 1 and probed with anti-MYC Tag (1/1000) in Lane 3. Mock-transfected HEK293 probed with CDH11 polyclonal antibody (Cat # PAB19043) (1 mg/mL) in Lane 2. Primary incubations were for 1 hour. Detected by chemiluminescence.

- Enzyme-linked Immunoabsorbent Assay

## Gene Info — CDH11

<b>Entrez GeneID</b>	<a href="#">1009</a>
<b>Protein Accession#</b>	<a href="#">NP_001788.2</a>
<b>Gene Name</b>	CDH11
<b>Gene Alias</b>	CAD11, CDHOB, OB, OSF-4
<b>Gene Description</b>	cadherin 11, type 2, OB-cadherin (osteoblast)
<b>Omim ID</b>	<a href="#">600023</a>
<b>Gene Ontology</b>	<a href="#">Hyperlink</a>
<b>Gene Summary</b>	This gene encodes a type II classical cadherin from the cadherin superfamily, integral membrane proteins that mediate calcium-dependent cell-cell adhesion. Mature cadherin proteins are composed of a large N-terminal extracellular domain, a single membrane-spanning domain, and a small, highly conserved C-terminal cytoplasmic domain. Type II (atypical) cadherins are defined based on their lack of a HAV cell adhesion recognition sequence specific to type I cadherins. Expression of this particular cadherin in osteoblastic cell lines, and its upregulation during differentiation, suggests a specific function in bone development and maintenance. [provided by RefSeq]
<b>Other Designations</b>	OB-cadherin cadherin 11, type 2 cadherin-11 osteoblast cadherin

## Disease

- [Alzheimer disease](#)
- [Cardiovascular Diseases](#)
- [Diabetes Complications](#)
- [Esophageal Neoplasms](#)
- [Genetic Predisposition to Disease](#)
- [Head and Neck Neoplasms](#)
- [Laryngeal Neoplasms](#)
- [Metabolic Syndrome X](#)
- [Mouth Neoplasms](#)
- [Neoplasms](#)
- [Osteoporosis](#)
- [Pharyngeal Neoplasms](#)
- [Tobacco Use Disorder](#)