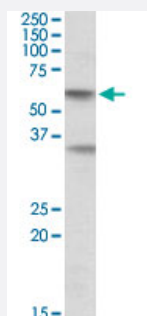


SIGLEC6 polyclonal antibody

Catalog # PAB19038 Size 100 ug

Applications



Western Blot (Tissue lysate)

SIGLEC6 polyclonal antibody (Cat # PAB19038) (0.5 ug/mL) staining of human placenta lysate (35 ug protein in RIPA buffer). Primary incubation was 1 hour. Detected by chemiluminescence.

Specification

Product Description	Goat polyclonal antibody raised against synthetic peptide of SIGLEC6.
Immunogen	A synthetic peptide corresponding to amino acids at internal region of human SIGLEC6.
Sequence	C-KWMKYGYTSSK
Host	Goat
Theoretical MW (kDa)	60, 35
Reactivity	Human
Form	Liquid
Purification	Antigen affinity purification
Concentration	0.5 mg/mL
Recommend Usage	ELISA (1:16000) Western Blot (0.5-1.5 ug/mL) The optimal working dilution should be determined by the end user.
Storage Buffer	In Tris saline, pH7.3 (0.5% BSA, 0.02% sodium azide)

Storage Instruction

Store at -20°C.
Aliquot to avoid repeated freezing and thawing.

Note

This product contains sodium azide: a POISONOUS AND HAZARDOUS SUBSTANCE which should be handled by trained staff only.

Applications

- Western Blot (Tissue lysate)

SIGLEC6 polyclonal antibody (Cat # PAB19038) (0.5 ug/mL) staining of human placenta lysate (35 ug protein in RIPA buffer). Primary incubation was 1 hour. Detected by chemiluminescence.

- Enzyme-linked Immunoabsorbent Assay

Gene Info — SIGLEC6

Entrez GeneID[946](#)**Protein Accession#**[NP_001236.4;NP_942142.3;NP_942143.3](#)**Gene Name**

SIGLEC6

Gene Alias

CD327, CD33L, CD33L1, CDw327, OBBP1, SIGLEC-6

Gene Description

sialic acid binding Ig-like lectin 6

Omim ID[604405](#)**Gene Ontology**[Hyperlink](#)**Other Designations**

CD33 antigen-like 1|CDw327 antigen|OTTHUMP00000164940|OTTHUMP00000164941|OTTHUMP00000164942|Obesity-binding protein 1