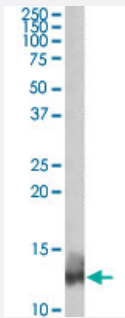


# PLN polyclonal antibody

Catalog # PAB19037      Size 100 ug

## Applications



### Western Blot (Tissue lysate)

PLN polyclonal antibody (Cat # PAB19037) (0.03 ug/mL) staining of human heart lysate (35 ug protein in RIPA buffer). Primary incubation was 1 hour. Detected by chemiluminescence.

## Specification

<b>Product Description</b>	Goat polyclonal antibody raised against synthetic peptide of PLN.
<b>Immunogen</b>	A synthetic peptide corresponding to amino acids at N-terminus of human PLN.
<b>Sequence</b>	KVQYLTRSAIRR-C
<b>Host</b>	Goat
<b>Theoretical MW (kDa)</b>	13
<b>Reactivity</b>	Human, Rat
<b>Form</b>	Liquid
<b>Purification</b>	Antigen affinity purification
<b>Concentration</b>	0.5 mg/mL
<b>Recommend Usage</b>	ELISA (1:8000) Western Blot (0.01-0.03 ug/mL) The optimal working dilution should be determined by the end user.
<b>Storage Buffer</b>	In Tris saline, pH7.3 (0.5% BSA, 0.02% sodium azide)

**Storage Instruction**

Store at -20°C.  
Aliquot to avoid repeated freezing and thawing.

**Note**

This product contains sodium azide: a POISONOUS AND HAZARDOUS SUBSTANCE which should be handled by trained staff only.

## Applications

- Western Blot (Tissue lysate)

PLN polyclonal antibody (Cat # PAB19037) (0.03 ug/mL) staining of human heart lysate (35 ug protein in RIPA buffer). Primary incubation was 1 hour. Detected by chemiluminescence.

- Enzyme-linked Immunoabsorbent Assay

## Gene Info — PLN

**Entrez GeneID**[5350](#)**Protein Accession#**[NP\\_002658.1](#)**Gene Name**

PLN

**Gene Alias**

CMD1P, PLB

**Gene Description**

phospholamban

**Omim ID**[172405 609909](#)**Gene Ontology**[Hyperlink](#)**Gene Summary**

The protein encoded by this gene is found as a pentamer and is a major substrate for the cAMP-dependent protein kinase in cardiac muscle. The encoded protein is an inhibitor of cardiac muscle sarcoplasmic reticulum Ca(2+)-ATPase in the unphosphorylated state, but inhibition is relieved upon phosphorylation of the protein. The subsequent activation of the Ca(2+) pump leads to enhanced muscle relaxation rates, thereby contributing to the inotropic response elicited in heart by beta-agonists. The encoded protein is a key regulator of cardiac diastolic function. Mutations in this gene are a cause of inherited human dilated cardiomyopathy with refractory congestive heart failure. [provided by RefSeq]

**Other Designations**

OTTHUMP00000017092|cardiac phospholamban

## Pathway

- [Calcium signaling pathway](#)

## Disease

- [Arrhythmias](#)
- [Asthma](#)
- [Cardiomyopathy](#)
- [Cardiovascular Diseases](#)
- [Death](#)
- [Disease Progression](#)
- [Genetic Predisposition to Disease](#)
- [Long QT syndrome](#)
- [Ventricular Dysfunction](#)