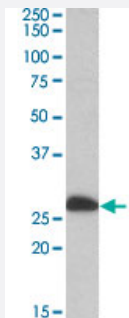


# ETFB polyclonal antibody

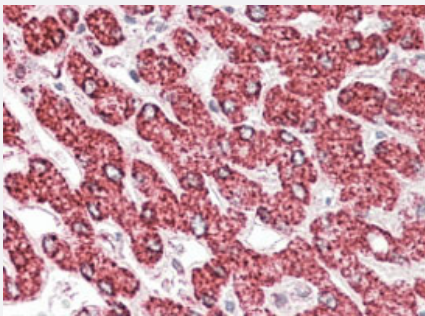
Catalog # PAB19033      Size 100 ug

## Applications



### Western Blot (Tissue lysate)

ETFB polyclonal antibody (Cat # PAB19033) (0.1 ug/mL) staining of human liver lysate (35 ug protein in RIPA buffer). Primary incubation was 1 hour. Detected by chemiluminescence.



### Immunohistochemistry (Formalin/PFA-fixed paraffin-embedded sections)

Immunohistochemical staining of human liver with ETFB polyclonal antibody (Cat # PAB19033) (3.8 ug/mL). Steamed antigen retrieval with citrate buffer pH 6, AP-staining.

## Specification

|                      |  |
|----------------------|--|
| Product Description  | Goat polyclonal antibody raised against synthetic peptide of ETFB.                         |
| Immunogen            | A synthetic peptide corresponding to amino acids 152-165 at internal region of human ETFB. |
| Sequence             | C-QVTLEGDKLKVERE   |
| Host                 | Goat   |
| Theoretical MW (kDa) | 27   |
| Reactivity           | Human, Mouse, Rat  |
| Form                 | Liquid   |

|                            |   |
|----------------------------|---|
| <b>Purification</b>        | Antigen affinity purification   |
| <b>Concentration</b>       | 0.5 mg/mL   |
| <b>Recommend Usage</b>     | Immunohistochemistry (Formalin/PFA-fixed paraffin-embedded sections)(3-5 ug/mL)<br>ELISA (1:8000)<br>Western Blot (1-3 ug/mL)<br>The optimal working dilution should be determined by the end user. |
| <b>Storage Buffer</b>      | In Tris saline, pH7.3 (0.5% BSA, 0.02% sodium azide)  |
| <b>Storage Instruction</b> | Store at -20°C.<br>Aliquot to avoid repeated freezing and thawing.  |
| <b>Note</b>                | This product contains sodium azide: a POISONOUS AND HAZARDOUS SUBSTANCE which should be handled by trained staff only.  |

## Applications

- Western Blot (Tissue lysate)

ETFB polyclonal antibody (Cat # PAB19033) (0.1 ug/mL) staining of human liver lysate (35 ug protein in RIPA buffer). Primary incubation was 1 hour. Detected by chemiluminescence.

- Immunohistochemistry (Formalin/PFA-fixed paraffin-embedded sections)

Immunohistochemical staining of human liver with ETFB polyclonal antibody (Cat # PAB19033) (3.8 ug/mL). Steamed antigen retrieval with citrate buffer pH 6, AP-staining.

- Enzyme-linked Immunoabsorbent Assay

## Gene Info — ETFB

|                           |  |
|---------------------------|--|
| <b>Entrez GeneID</b>      | <a href="#">2109</a>                             |
| <b>Protein Accession#</b> | <a href="#">NP_001976.1;NP_001014763.1</a>       |
| <b>Gene Name</b>          | ETFB   |
| <b>Gene Alias</b>         | FP585, MADD                                      |
| <b>Gene Description</b>   | electron-transfer-flavoprotein, beta polypeptide |
| <b>Omim ID</b>            | <a href="#">130410 231680</a>                    |
| <b>Gene Ontology</b>      | <a href="#">Hyperlink</a>                        |

**Gene Summary**

This gene encodes electron-transfer-flavoprotein, beta polypeptide, which shuttles electrons between primary flavoprotein dehydrogenases involved in mitochondrial fatty acid and amino acid catabolism and the membrane-bound electron transfer flavoprotein ubiquinone oxidoreductase. The gene deficiencies have been implicated in type II glutaricaciduria. Alternatively spliced transcript variants have been found for this gene. [provided by RefSeq]

**Other Designations**

electron transfer flavoprotein beta subunit|electron transfer flavoprotein beta-subunit|electron transfer flavoprotein, beta polypeptide|electron-transferring-flavoprotein, beta polypeptide

**Disease**

- [Lipid Metabolism Disorders](#)
- [Muscular Diseases](#)