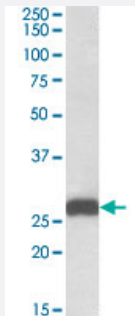


ETFB polyclonal antibody

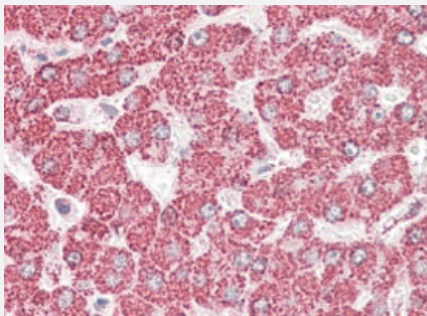
Catalog # PAB19027 Size 100 ug

Applications



Western Blot (Tissue lysate)

ETFB polyclonal antibody (Cat # PAB19027) (0.01 ug/mL) staining of mouse liver lysate (35 ug protein in RIPA buffer). Primary incubation was 1 hour. Detected by chemiluminescence.



Immunohistochemistry (Formalin/PFA-fixed paraffin-embedded sections)

Immunohistochemical staining of human liver with ETFB polyclonal antibody (Cat # PAB19027) (3.8 ug/mL). Steamed antigen retrieval with citrate buffer pH 6, AP-staining.

Specification

Product Description	Goat polyclonal antibody raised against synthetic peptide of ETFB.
Immunogen	A synthetic peptide corresponding to amino acids 231-243 at C-terminus of human ETFB.
Sequence	C-PQRTAGVKVETTE
Host	Goat
Theoretical MW (kDa)	26
Reactivity	Human, Mouse, Rat
Form	Liquid

Purification	Antigen affinity purification
Concentration	0.5 mg/mL
Recommend Usage	Immunohistochemistry (Formalin/PFA-fixed paraffin-embedded sections)(3-5 ug/mL) ELISA (1:8000) Western Blot (0.01-0.03 ug/mL) The optimal working dilution should be determined by the end user.
Storage Buffer	In Tris saline, pH7.3 (0.5% BSA, 0.02% sodium azide)
Storage Instruction	Store at -20°C. Aliquot to avoid repeated freezing and thawing.
Note	This product contains sodium azide: a POISONOUS AND HAZARDOUS SUBSTANCE which should be handled by trained staff only.

Applications

- Western Blot (Tissue lysate)

ETFB polyclonal antibody (Cat # PAB19027) (0.01 ug/mL) staining of mouse liver lysate (35 ug protein in RIPA buffer). Primary incubation was 1 hour. Detected by chemiluminescence.

- Immunohistochemistry (Formalin/PFA-fixed paraffin-embedded sections)

Immunohistochemical staining of human liver with ETFB polyclonal antibody (Cat # PAB19027) (3.8 ug/mL). Steamed antigen retrieval with citrate buffer pH 6, AP-staining.

- Enzyme-linked Immunoabsorbent Assay

Gene Info — ETFB

Entrez GeneID	2109
Protein Accession#	NP_001976.1;NP_001014763.1
Gene Name	ETFB
Gene Alias	FP585, MADD
Gene Description	electron-transfer-flavoprotein, beta polypeptide
Omim ID	130410 231680
Gene Ontology	Hyperlink

Gene Summary

This gene encodes electron-transfer-flavoprotein, beta polypeptide, which shuttles electrons between primary flavoprotein dehydrogenases involved in mitochondrial fatty acid and amino acid catabolism and the membrane-bound electron transfer flavoprotein ubiquinone oxidoreductase. The gene deficiencies have been implicated in type II glutaricaciduria. Alternatively spliced transcript variants have been found for this gene. [provided by RefSeq]

Other Designations

electron transfer flavoprotein beta subunit|electron transfer flavoprotein beta-subunit|electron transfer flavoprotein, beta polypeptide|electron-transferring-flavoprotein, beta polypeptide

Disease

- [Lipid Metabolism Disorders](#)
- [Muscular Diseases](#)