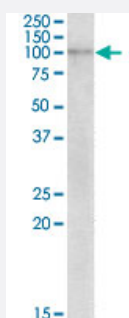


NLRX1 polyclonal antibody

Catalog # PAB19025 Size 100 ug

Applications



Western Blot (Tissue lysate)

NLRX1 polyclonal antibody (Cat # PAB19025) (2 ug/mL) staining of human breast cancer lysate (35 ug protein in RIPA buffer). Primary incubation was 1 hour. Detected by chemiluminescence.

Specification

Product Description	Goat polyclonal antibody raised against synthetic peptide of NLRX1.
Immunogen	A synthetic peptide corresponding to amino acids at internal region of human NLRX1.
Sequence	C-NFSGETLDSTDPSN
Host	Goat
Theoretical MW (kDa)	100
Reactivity	Human
Form	Liquid
Purification	Antigen affinity purification
Concentration	0.5 mg/mL
Recommend Usage	ELISA (1:16000) Western Blot (1-3 ug/mL) The optimal working dilution should be determined by the end user.
Storage Buffer	In Tris saline, pH7.3 (0.5% BSA, 0.02% sodium azide)

Storage Instruction

Store at -20°C.
Aliquot to avoid repeated freezing and thawing.

Note

This product contains sodium azide: a POISONOUS AND HAZARDOUS SUBSTANCE which should be handled by trained staff only.

Applications

- Western Blot (Tissue lysate)

NLRX1 polyclonal antibody (Cat # PAB19025) (2 ug/mL) staining of human breast cancer lysate (35 ug protein in RIPA buffer). Primary incubation was 1 hour. Detected by chemiluminescence.

- Enzyme-linked Immunoabsorbent Assay

Gene Info — NLRX1

Entrez GeneID[79671](#)**Protein Accession#**[NP_078894.2;NP_733840.1](#)**Gene Name**

NLRX1

Gene Alias

CLR11.3, DLNB26, FLJ21478, MGC131937, MGC21025, NOD26, NOD5, NOD9

Gene Description

NLR family member X1

Gene Ontology[Hyperlink](#)**Gene Summary**

This gene encodes a member of the NLR family. Alternative splicing has been observed at this gene locus and two transcript variants, encoding distinct isoforms, have been identified. [provided by RefSeq]

Other Designations

NLR family, X1|NOD-like receptor X1|nucleotide-binding oligomerization domain, leucine rich repeat containing X1

Disease

- [Cardiovascular Diseases](#)

- [Diabetes Mellitus](#)

- [Edema](#)