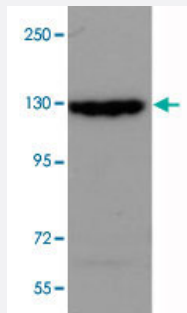


SRGAP2 polyclonal antibody

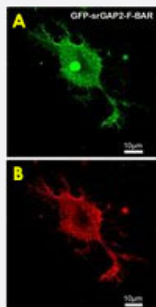
Catalog # PAB19024 Size 100 ug

Applications



Western Blot (Tissue lysate)

SRGAP2 polyclonal antibody (Cat # PAB19024) (0.1 ug/mL) staining of rat cortical neuron lysate (35 ug protein in RIPA buffer). Primary incubation was 1 hour. Detected by chemiluminescence. Data kindly provided by Ms. Ya-Jing Mi and Dr. Wei-Lin Jin, Institute of Neurosciences, Shanghai Jiao Tong University.



Immunofluorescence

HEK293 overexpressing human SRGAP2 and probed with SRGAP2 polyclonal antibody (Cat # PAB19024) at 2.5 ug/mL in the right panel. Data kindly provided by Ms. Ya-Jing Mi and Dr. Wei-Lin Jin, Institute of Neurosciences, Shanghai Jiao Tong University.

Specification

| | |
|----------------------|--|
| Product Description | Goat polyclonal antibody raised against synthetic peptide of SRGAP2. |
| Immunogen | A synthetic peptide corresponding to amino acids at internal region of human SRGAP2. |
| Sequence | C-KQEDRQTPRSPDST |
| Host | Goat |
| Theoretical MW (kDa) | 50 |
| Reactivity | Human |
| Form | Liquid |

| | |
|---------------------|--|
| Purification | Antigen affinity purification |
| Concentration | 0.5 mg/mL |
| Recommend Usage | ELISA (1:8000) Western Blot (1 ug/mL) The optimal working dilution should be determined by the end user. |
| Storage Buffer | In Tris saline, pH7.3 (0.5% BSA, 0.02% sodium azide) |
| Storage Instruction | Store at -20°C. Aliquot to avoid repeated freezing and thawing. |
| Note | This product contains sodium azide: a POISONOUS AND HAZARDOUS SUBSTANCE which should be handled by trained staff only. |

Applications

- Western Blot (Tissue lysate)

SRGAP2 polyclonal antibody (Cat # PAB19024) (0.1 ug/mL) staining of rat cortical neuron lysate (35 ug protein in RIPA buffer). Primary incubation was 1 hour. Detected by chemiluminescence. Data kindly provided by Ms. Ya-Jing Mi and Dr. Wei-Lin Jin, Institute of Neurosciences, Shanghai Jiao Tong University.

- Immunofluorescence

HEK293 overexpressing human SRGAP2 and probed with SRGAP2 polyclonal antibody (Cat # PAB19024) at 2.5 ug/mL in the right panel. Data kindly provided by Ms. Ya-Jing Mi and Dr. Wei-Lin Jin, Institute of Neurosciences, Shanghai Jiao Tong University.

- Enzyme-linked Immunoabsorbent Assay

Gene Info — SRGAP2

| | |
|--------------------|---|
| Entrez GeneID | 23380 |
| Protein Accession# | NP_056141.2 |
| Gene Name | SRGAP2 |
| Gene Alias | FNBP2, KIAA0456, srGAP3 |
| Gene Description | SLIT-ROBO Rho GTPase activating protein 2 |
| Omim ID | 606524 |
| Gene Ontology | Hyperlink |

Other Designations

formin binding protein 2

Pathway

- [Axon guidance](#)

Disease

- [Cardiovascular Diseases](#)
- [Cognition](#)
- [Diabetes Mellitus](#)
- [Edema](#)
- [Tobacco Use Disorder](#)