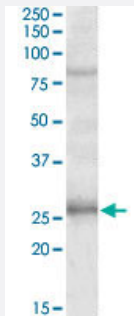


GPRIN3 polyclonal antibody

Catalog # PAB19016 Size 100 ug

Applications



Western Blot (Tissue lysate)

GPRIN3 polyclonal antibody (Cat # PAB19016) (1 ug/mL) staining of human hippocampus lysate (35 ug protein in RIPA buffer). Primary incubation was 1 hour. Detected by chemiluminescence.

Specification

Product Description	Goat polyclonal antibody raised against synthetic peptide of GPRIN3.
Immunogen	A synthetic peptide corresponding to amino acids at internal region of human GPRIN3.
Sequence	C-TLEENRQTKT
Host	Goat
Theoretical MW (kDa)	80
Reactivity	Human
Form	Liquid
Purification	Antigen affinity purification
Concentration	0.5 mg/mL
Recommend Usage	ELISA (1:4000) Western Blot (1-3 ug/mL) The optimal working dilution should be determined by the end user.
Storage Buffer	In Tris saline, pH7.3 (0.5% BSA, 0.02% sodium azide)

Storage Instruction

Store at -20°C.
Aliquot to avoid repeated freezing and thawing.

Note

This product contains sodium azide: a POISONOUS AND HAZARDOUS SUBSTANCE which should be handled by trained staff only.

Applications

- Western Blot (Tissue lysate)

GPRIN3 polyclonal antibody (Cat # PAB19016) (1 ug/mL) staining of human hippocampus lysate (35 ug protein in RIPA buffer). Primary incubation was 1 hour. Detected by chemiluminescence.

- Enzyme-linked Immunoabsorbent Assay

Gene Info — GPRIN3

Entrez GeneID[285513](#)**Protein Accession#**[NP_938022.2](#)**Gene Name**

GPRIN3

Gene Alias

FLJ42625, GRIN3

Gene Description

GPRIN family member 3

Omim ID[611241](#)**Gene Ontology**[Hyperlink](#)**Other Designations**

G protein-regulated inducer of neurite outgrowth 3