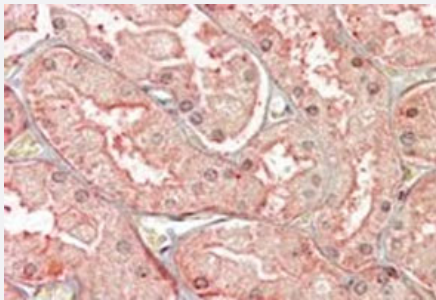


SFRP1 polyclonal antibody

Catalog # PAB19007 Size 100 ug

Applications



Immunohistochemistry (Formalin/PFA-fixed paraffin-embedded sections)

SFRP1 polyclonal antibody (Cat # PAB19007, 3.8 ug/mL) staining of paraffin embedded human kidney. Steamed antigen retrieval with citrate buffer pH 6, AP-staining.

Specification

Product Description	Goat polyclonal antibody raised against synthetic peptide of SFRP1.
Immunogen	A synthetic peptide corresponding to amino acids at C-terminus of humanSFRP1.
Sequence	KNHECPTFQSVFK
Host	Goat
Reactivity	Human
Form	Liquid
Purification	Antigen affinity purification
Concentration	0.5 mg/mL
Recommend Usage	ELISA (1:1000) Immunohistochemistry (3-6 ug/mL) The optimal working dilution should be determined by the end user.
Storage Buffer	In 0.5 mg/mL in Tris saline, pH7.3 (0.5% BSA, 0.02% sodium azide)

Storage Instruction

Store at -20°C.
Aliquot to avoid repeated freezing and thawing.

Note

This product contains sodium azide: a POISONOUS AND HAZARDOUS SUBSTANCE which should be handled by trained staff only.

Applications

- Immunohistochemistry (Formalin/PFA-fixed paraffin-embedded sections)

SFRP1 polyclonal antibody (Cat # PAB19007, 3.8 ug/mL) staining of paraffin embedded human kidney. Steamed antigen retrieval with citrate buffer pH 6, AP-staining.

- Enzyme-linked Immunoabsorbent Assay

Gene Info — SFRP1

Entrez GeneID[6422](#)**Protein Accession#**[NP_003003.3](#)**Gene Name**

SFRP1

Gene Alias

FRP, FRP-1, FRP1, FrzA, SARP2

Gene Description

secreted frizzled-related protein 1

Omim ID[604156](#)**Gene Ontology**[Hyperlink](#)**Gene Summary**

This gene encodes a member of the SFRP family that contains a cysteine-rich domain homologous to the putative Wnt-binding site of Frizzled proteins. Members of this family act as soluble modulators of Wnt signaling; epigenetic silencing of SFRP genes leads to deregulated activation of the Wnt-pathway which is associated with cancer. This gene may also be involved in determining the polarity of photoreceptor cells in the retina. [provided by RefSeq]

Other Designations

secreted apoptosis-related protein 2

Publication Reference

- [Tear levels of SFRP1 are significantly reduced in keratoconus patients.](#)

You J, Hodge C, Wen L, McAvoy JW, Madigan MC, Sutton G.

Molecular Vision 2013 Feb; 19:509.

Application: ELISA, Human, Human tear

Pathway

- [Wnt signaling pathway](#)

Disease

- [Asthma](#)
- [Bronchial Hyperreactivity](#)
- [Osteoporosis](#)