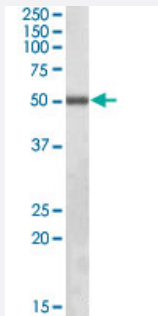


ILK polyclonal antibody

Catalog # PAB18999 Size 100 ug

Applications



Western Blot (Cell lysate)

ILK polyclonal antibody (Cat # PAB18999, 0.5 ug/mL) staining of NIH/3T3 lysate (35 ug protein in RIPA buffer). Primary incubation was 1 hour. Detected by chemiluminescence.

Specification

Product Description	Goat polyclonal antibody raised against synthetic peptide of ILK.
Immunogen	A synthetic peptide corresponding to amino acids at C-terminus of human ILK.
Sequence	C-DMIVPILEKMQDK
Host	Goat
Theoretical MW (kDa)	52
Reactivity	Human
Form	Liquid
Purification	Antigen affinity purification
Concentration	0.5 mg/mL
Recommend Usage	ELISA (1:32000) Western Blot (0.5-2 ug/mL) The optimal working dilution should be determined by the end user.
Storage Buffer	In Tris saline, pH7.3 (0.5% BSA, 0.02% sodium azide)

Storage Instruction

Store at -20°C.
Aliquot to avoid repeated freezing and thawing.

Note

This product contains sodium azide: a POISONOUS AND HAZARDOUS SUBSTANCE which should be handled by trained staff only.

Applications

- Western Blot (Cell lysate)

ILK polyclonal antibody (Cat # PAB18999, 0.5 ug/mL) staining of NIH/3T3 lysate (35 ug protein in RIPA buffer). Primary incubation was 1 hour. Detected by chemiluminescence.

- Enzyme-linked Immunoabsorbent Assay

Gene Info — ILK

Entrez GeneID[3611](#)**Protein Accession#**[NP_004508.1;NP_001014794.1;NP_001014795.1](#)**Gene Name**

ILK

Gene Alias

DKFZp686F1765, P59

Gene Description

integrin-linked kinase

Omim ID[602366](#)**Gene Ontology**[Hyperlink](#)**Gene Summary**

Transduction of extracellular matrix signals through integrins influences intracellular and extracellular functions, and appears to require interaction of integrin cytoplasmic domains with cellular proteins. Integrin-linked kinase (ILK), interacts with the cytoplasmic domain of beta-1 integrin. This gene encodes a serine/threonine protein kinase with 4 ankyrin-like repeats, which associates with the cytoplasmic domain of beta integrins and acts as a proximal receptor kinase regulating integrin-mediated signal transduction. Multiple alternatively spliced transcript variants encoding the same protein have been found for this gene. [provided by RefSeq]

Other Designations

-

Pathway

- [Endometrial cancer](#)

- [Focal adhesion](#)
- [PPAR signaling pathway](#)