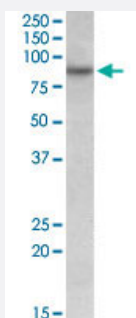


RUFY1 polyclonal antibody

Catalog # PAB18985 Size 100 ug

Applications



Western Blot (Cell lysate)

RUFY1 polyclonal antibody (Cat # PAB18985, 0.05 ug/mL) staining of HeLa lysate (35 ug protein in RIPA buffer). Primary incubation was 1 hour. Detected by chemiluminescence.

Specification

Product Description	Goat polyclonal antibody raised against synthetic peptide of RUFY1.
Immunogen	A synthetic peptide corresponding to amino acids at internal region of human RUFY1.
Sequence	C-QKNEAITSFEGKT
Host	Goat
Theoretical MW (kDa)	85
Reactivity	Human
Specificity	This antibody is expected to recognize both reported isoforms (NP_079434.3; NP_001035541.1). Reported variants represent identical protein: NP_001035542.1, NP_001035541.1.
Form	Liquid
Purification	Antigen affinity purification
Concentration	0.5 mg/mL

Recommend Usage	ELISA (1:32000) Western Blot (0.05-0.2 ug/mL) The optimal working dilution should be determined by the end user.
Storage Buffer	In 0.5 mg/mL in Tris saline, pH7.3 (0.5% BSA, 0.02% sodium azide)
Storage Instruction	Store at -20°C. Aliquot to avoid repeated freezing and thawing.
Note	This product contains sodium azide: a POISONOUS AND HAZARDOUS SUBSTANCE which should be handled by trained staff only.

Applications

- Western Blot (Cell lysate)

RUFY1 polyclonal antibody (Cat # PAB18985, 0.05 ug/mL) staining of HeLa lysate (35 ug protein in RIPA buffer). Primary incubation was 1 hour. Detected by chemiluminescence.

- Enzyme-linked Immunoabsorbent Assay

Gene Info — RUFY1

Entrez GeneID	80230
Protein Accession#	NP_079434.3;NP_001035541.1
Gene Name	RUFY1
Gene Alias	FLJ22251, RABIP4, ZFYVE12
Gene Description	RUN and FYVE domain containing 1
Omim ID	610327
Gene Ontology	Hyperlink
Other Designations	OTTHUMP00000161521 RUN and FYVE domain-containing 1

Pathway

- [Endocytosis](#)