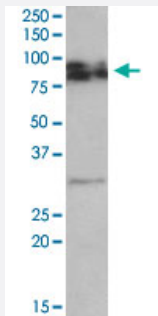


GPM6A polyclonal antibody

Catalog # PAB18981 Size 100 ug

Applications



Western Blot (Tissue lysate)

GPM6A polyclonal antibody (Cat # PAB18981, 0.5 ug/mL) staining of rat brain lysate (35 ug protein in RIPA buffer). Primary incubation was 1 hour. Detected by chemiluminescence.

Specification

Product Description	Goat polyclonal antibody raised against synthetic peptide of GPM6A.
Immunogen	A synthetic peptide corresponding to amino acids at internal region of human GPM6A.
Sequence	C-QTYFEMARTAGD
Host	Goat
Theoretical MW (kDa)	30
Reactivity	Human, Mouse, Rat
Specificity	This product has been demonstrated not suitable in IF.
Form	Liquid
Purification	Antigen affinity purification
Concentration	0.5 mg/mL
Recommend Usage	ELISA (1:32000) Western Blot (0.5-2 ug/mL) The optimal working dilution should be determined by the end user.

Storage Buffer	In 0.5 mg/mL in Tris saline, pH7.3 (0.5% BSA, 0.02% sodium azide)
Storage Instruction	Store at -20°C. Aliquot to avoid repeated freezing and thawing.
Note	This product contains sodium azide: a POISONOUS AND HAZARDOUS SUBSTANCE which should be handled by trained staff only.

Applications

- Western Blot (Tissue lysate)

GPM6A polyclonal antibody (Cat # PAB18981, 0.5 ug/mL) staining of rat brain lysate (35 ug protein in RIPA buffer). Primary incubation was 1 hour. Detected by chemiluminescence.

- Enzyme-linked Immunoabsorbent Assay

Gene Info — GPM6A

Entrez GeneID	2823
Protein Accession#	NP_005268.1 ; NP_963885.1 ; NP_963886.1
Gene Name	GPM6A
Gene Alias	GPM6, M6A
Gene Description	glycoprotein M6A
Omim ID	601275
Gene Ontology	Hyperlink
Other Designations	-

Disease

- [Genetic Predisposition to Disease](#)
- [Schizophrenia](#)
- [Tobacco Use Disorder](#)