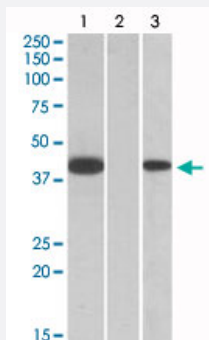


FANCF polyclonal antibody

Catalog # PAB18970 Size 100 ug

Applications



Western Blot (Transfected lysate)

HEK293 lysate (10 ug protein in RIPA buffer) overexpressing human FANCF with C-terminal MYC tag probed with FANCF polyclonal antibody (Cat # PAB18970, 1 ug/mL) in Lane A and probed with anti-MYC Tag (1/1000) in lane C. Mock-transfected HEK293 probed with FANCF polyclonal antibody (Cat # PAB18970, 1mg/mL) in Lane B. Primary incubations were for 1 hour. Detected by chemiluminescence.

Specification

Product Description	Goat polyclonal antibody raised against synthetic peptide of FANCF.
Immunogen	A synthetic peptide corresponding to amino acids at internal region of human FANCF.
Sequence	C-RPQEELEPGIHK
Host	Goat
Theoretical MW (kDa)	40
Reactivity	Human
Form	Liquid
Purification	Antigen affinity purification
Concentration	0.5 mg/mL
Recommend Usage	ELISA (1:16000) Western Blot (0.2-1 ug/mL) The optimal working dilution should be determined by the end user.
Storage Buffer	In 0.5 mg/mL in Tris saline, pH7.3 (0.5% BSA, 0.02% sodium azide)

Storage Instruction

Store at -20°C.
Aliquot to avoid repeated freezing and thawing.

Note

This product contains sodium azide: a POISONOUS AND HAZARDOUS SUBSTANCE which should be handled by trained staff only.

Applications

- Western Blot (Transfected lysate)

HEK293 lysate (10 ug protein in RIPA buffer) overexpressing human FANCF with C-terminal MYC tag probed with FANCF polyclonal antibody (Cat # PAB18970, 1 ug/mL) in Lane A and probed with anti-MYC Tag (1/1000) in lane C. Mock-transfected HEK293 probed with FANCF polyclonal antibody (Cat # PAB18970, 1mg/mL) in Lane B. Primary incubations were for 1 hour. Detected by chemiluminescence.

- Enzyme-linked Immunoabsorbent Assay

Gene Info — FANCF

Entrez GeneID [2188](#)

Protein Accession# [NP_073562.1](#)

Gene Name FANCF

Gene Alias FAF, MGC126856

Gene Description Fanconi anemia, complementation group F

Omim ID [603467](#)

Gene Ontology [Hyperlink](#)

Gene Summary The Fanconi anemia complementation group (FANC) currently includes FANCA, FANCB, FANCC, FANCD1 (also called BRCA2), FANCD2, FANCE, FANCF, FANCG, FANCI, FANCIJ (also called BRIP1), FANCL, FANCM and FANCN (also called PALB2). The previously defined group FANCH is the same as FANCA. Fanconi anemia is a genetically heterogeneous recessive disorder characterized by cytogenetic instability, hypersensitivity to DNA crosslinking agents, increased chromosomal breakage, and defective DNA repair. The members of the Fanconi anemia complementation group do not share sequence similarity; they are related by their assembly into a common nuclear protein complex. This gene encodes the protein for complementation group F. [provided by RefSeq]

Other Designations -

Disease

- [Adenocarcinoma](#)
- [Breast cancer](#)
- [Breast Neoplasms](#)
- [Genetic Predisposition to Disease](#)
- [Neoplasms](#)
- [Ovarian cancer](#)
- [Ovarian Neoplasms](#)
- [Pancreatic Neoplasms](#)