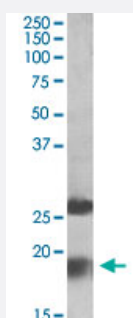


MPV17 polyclonal antibody

Catalog # PAB18966 Size 100 ug

Applications



Western Blot (Tissue lysate)

MPV17 polyclonal antibody (Cat # PAB18966, 2 ug/mL) staining of human frontal cortex lysate (35 ug protein in RIPA buffer). Primary incubation was 1 hour. Detected by chemiluminescence.

Specification

Product Description	Goat polyclonal antibody raised against synthetic peptide of MPV17.
Immunogen	A synthetic peptide corresponding to amino acids at internal region of human MPV17.
Sequence	C-QRALAAHPWKVQ
Host	Goat
Reactivity	Human
Form	Liquid
Purification	Antigen affinity purification
Concentration	0.5 mg/mL
Recommend Usage	ELISA (1:32000) Western blot (1-3 ug/mL) The optimal working dilution should be determined by the end user.
Storage Buffer	In 0.5 mg/mL in Tris saline, pH7.3 (0.5% BSA, 0.02% sodium azide)

Storage Instruction

Store at -20°C.
Aliquot to avoid repeated freezing and thawing.

Note

This product contains sodium azide: a POISONOUS AND HAZARDOUS SUBSTANCE which should be handled by trained staff only.

Applications

- Western Blot (Tissue lysate)

MPV17 polyclonal antibody (Cat # PAB18966, 2 ug/mL) staining of human frontal cortex lysate (35 ug protein in RIPA buffer). Primary incubation was 1 hour. Detected by chemiluminescence.

- Enzyme-linked Immunoabsorbent Assay

Gene Info — MPV17

Entrez GeneID[4358](#)**Protein Accession#**[NP_002428.1](#)**Gene Name**

MPV17

Gene Alias

SYM1

Gene Description

MpV17 mitochondrial inner membrane protein

Omim ID[137960 251880](#)**Gene Ontology**[Hyperlink](#)**Gene Summary**

This gene encodes a mitochondrial inner membrane protein that is implicated in the metabolism of reactive oxygen species. Mutations in this gene have been associated with the hepatocerebral form of mitochondrial DNA depletion syndrome (MDDS). [provided by RefSeq]

Other Designations

Mpv17 protein|Mpv17, human homolog of glomerulosclerosis and nephrotic syndrome|OTTHUMP00000122592